



*Recognising excellence in the
built environment since 1959*



The Helix, Falkirk: Ironside Farrar are pleased to have led the successful funding bid, masterplanning, landscape design and implementation of this innovative, transformational project for Falkirk Community Trust, Falkirk Council and Scottish Canals

IronsideFarrar
Environmental Consultants

www.ironsidefarrar.com

Foreword



Malcolm Hankey
BSc LLB IEng MICE Hon FRIBA
Managing Director
Civic Trust Awards

For our 2015 application round, 238 entries were submitted for consideration. In addition to submissions for the Civic Trust Awards and Pro Tem Awards (for temporary projects and installations) we also saw the launch of the new conservation category, which we are delivering in partnership with The Register of Architects Accredited in Building Conservation (AABC). The popularity of the new AABC Conservation Awards scheme was clearly evident as 38 entries were submitted in its inaugural year.

At the first phase assessment, 146 schemes were considered to be of merit at a regional level by our teams of volunteer assessors and it is from this list of 'Regional Finalists' that the 91 projects featured in this brochure were selected by our National Panel and AABC Conservation Panel for national/international recognition.

I would like to express my gratitude to Derwent London, Metropolitan Workshop, Glasgow City Council and The City of Edinburgh Council for their sponsorship of our Special Awards.

Thank you to Queen Elizabeth Olympic Park and Becky Goldsmith for their support of the Selwyn Goldsmith Award for Universal Design. We are delighted to have attracted a high profile sponsorship partner for such a valuable award, recognising the importance of design that meets the needs of all users.

I'd also like to take this opportunity to acknowledge the invaluable contribution of our Patrons, National Panel, Advisory Group, AABC Conservation Panel, Selwyn Goldsmith Award Judging Panel and our many hundreds of volunteer assessors for their support of the scheme, collectively giving up many thousands of hours to deliver our judging and ratification process.

Thank you to our Corporate & Local Authority Members, whose support is vital to help underpin the Awards scheme and demonstrates a collective commitment to raising standards in the built environment. On a personal note, thank you also to our Operations Manager, Karen Hankey who plays a crucial role in the continued success of the Civic Trust Awards.

Finally, thank you to the organisations who submitted their schemes to us for consideration and my sincerest congratulations to each of our 91 winners!

**Malcolm Hankey BSc LLB IEng MICE Hon FRIBA
Managing Director
Civic Trust Awards**

Contents

- 02 National Panel and Civic Trust Awards Patrons
- 03 AABC Conservation Awards Judging Panel
- 03 Selwyn Goldsmith Award for Universal Design Judging Panel
- 05 Comment – David Prichard, Chairman of the Civic Trust Awards National Panel

Civic Trust Awards 2015 - Special Award Winners

- 06 National Panel Special Award
- 08 Michael Middleton Special Award
- 10 Special Award for Sustainability
- 12 Special Award for Community Impact & Engagement
- 14 Special Award for Brick sponsored by Derwent London
- 16 Pro Tem Special Award sponsored by Metropolitan Workshop
- 18 Special Award for Scotland supported by The City of Edinburgh Council and Glasgow City Council
- 20 Selwyn Goldsmith Award for Universal Design sponsored by Queen Elizabeth Olympic Park

Civic Trust Awards, Pro Tem Awards and AABC Conservation Awards Winners

- 22 Awards (International)
- 25 Awards (UK)
- 35 AABC Conservation Awards
- 38 Pro Tem Awards
- 40 Commendations (International)
- 41 Commendations (UK)
- 61 AABC Conservation Commendations
- 66 Pro Tem Commendations

67 Regional Finalists

68 Civic Trust Awards Assessors and Members

Managing Director
Malcolm Hankey

Operations Manager
Karen Hankey

Brochure Designer
Peter Cunliffe

Publisher
LWV Printworks

Address
Civic Trust Awards
Centrix House
Crow Lane East
Newton-le-Willows
Merseyside
WA12 9UY

Tel
(01925) 270647

Email
info@civictrustawards.org.uk

Website
www.civictrustawards.org.uk

Sponsorship opportunities

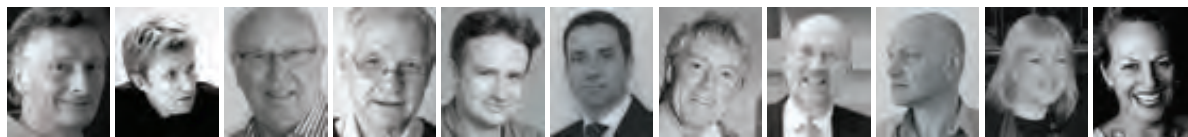
The Civic Trust Awards offer a wide range of sponsorship opportunities, including our Special Awards and Awards Ceremony packages. If you would like to discuss the benefits that sponsorship could bring to your organisation, please contact Malcolm Hankey on (01925) 270647 or email mhankey@civictrustawards.org.uk

Cover Photo

Blood Swept Lands and Seas of Red
Photo: Richard Lea-Hair
and Historic Royal Palaces

With special thanks to our supporters and sponsors:

The family of Michael Middleton CBE
The family of Selwyn Goldsmith
Derwent London
Queen Elizabeth Olympic Park
Metropolitan Workshop
Glasgow City Council
City of Edinburgh Council
BDP
Wilkinson Eyre



Civic Trust Awards National Panel

The Civic Trust Awards National Panel are a representative group of experts who make the final decision on the level of awards to be given, ensuring national consistency.

David Prichard (Chair)

David is co-founder of Metropolitan Workshop LLP. The practice's recent work embraces architectural, urban design and regional planning commissions for government agencies, local authorities and major developers in Ireland, Norway, Jordan, Libya, Sudan and the UK. David has been a RIBA external examiner, guest critic and lectured at numerous universities and judged several awards and international competitions. As a Civic Trust Awards assessor for many years, David was invited onto the National Panel of judges which he has chaired since 2004.

Keith Williams (Vice Chair)

Keith is design director and founder of London based Keith Williams Architects, a multi-award winning architectural design practice with a fast growing international reputation for the creation of dramatic, innovative sustainable architecture. Founded in 2001, the firm has received 25 major design awards and was twice winner of the prestigious BD Public Building Architect of the Year Award in 2006 & 2008. Keith is a member of the Royal Institute of Architects of Ireland, a Fellow of the Royal Society of Arts, a member of the Royal Institute of British Architects and sits on the National Design Review panel at Design Council CABE. He has judged numerous major award schemes, lectured widely on architecture and his firm's work and has recently been made Honorary Visiting Professor of Architecture at Zhengzhou University, China.

Victor Rose

Having worked for the Civic Trust for over 43 years, Victor was involved with the Civic Trust Awards from its inception in 1959 and continues to play an active role on both the National Panel and Advisory Group. He is also an area advisor to The South Downs Society in West Sussex.

Max Fordham

Max founded Max Fordham LLP in 1966 and pursued a new approach to engineering practice based on his own insatiable curiosity about how buildings work. He resisted pigeonholing into the conventional boxes of engineering; mechanical or electrical. He was always interested in the whole building, taking a creative but essentially practical approach to building services design, starting "with the edge of the universe as its boundary and then quickly narrowing down to the specific problem". The firm he founded continues with the same philosophy, including its commitment to working as a partnership. In 2008 Max was honoured with the Prince Philip Designers Prize by the Design Council, recognised as a pioneer of environmental design for buildings.

Wayne Head

Wayne has 15 years' experience working on a series of projects, including healthcare, further education, universities and schools. He is currently BDP's Project Director and his portfolio of schools includes an exemplar design for the DfES Building Schools for the Future initiative. As director, Wayne led the 'Transform Schools' design team to success in BSF Islington reinventing eight major secondary schools in the Borough, including Civic Trust Commended Highbury Grove School and the Elizabeth Garret Anderson School for Girls, to be opened in 2012 by Michelle Obama. He is a member of the RIBA Forum organising the appointment of UK wide Client Design Advisors and several RIBA groups including the RIBA

awards short listing panel. Wayne is a Design Council CABE Enabler assessing education and healthcare projects. He is visiting critic at Westminster University Studio 7 and is a Stephen Lawrence Trust Mentor. Wayne is an honourable trustee of the 'Learning from Jawali' village school project northern India. He has also recently formed a new practice in partnership with architect Anca Mihalache called Architecture With.

Simon Turton

Simon is a Director at Aperis Building Consultancy, a Chartered Building Surveyor and has been involved in Access Consultancy for the last 14 years. His experience comes from a wide variety of differing Client Sectors covering new and existing buildings. He is the current Chair of Management Board of The National Register of Access Consultants and he regularly sits on their interview panel for new members. Simon has provided CPD seminars to a variety of organisations and has spoken at national exhibition events, promoting Universal Design and Disability Awareness. Through his role at the NRAC, he has also been involved in the lobbying of Government to promote the role and value of Access Consultancy. He provides consultancy advice on many areas, including Disability Policies and legislation, with advice on the reasonableness of implementing works related to access improvements. Advice on the application of best practice is provided for the design of new buildings and its interpretation in relation to existing environments.

Iain Tuckett MBE

Iain is Group Director of Coin Street Community Builders (CSCB), a development trust and social enterprise which owns and is responsible for developing and managing 13 acres of London's South Bank. Iain has overseen all Coin Street developments to date including the refurbishment of Oxo Tower Wharf for mixed uses; Coin Street neighbourhood centre; Gabriel's Wharf; the completion of the South Bank riverside walkway and laying out of Bernie Spain Gardens; and housing developments for Mulberry, Palm, Redwood and Iroko Housing Co-operatives. Iain is chairman of South Bank Employers' Group, a not-for-profit company bringing together 18 major organisations based in the South Bank including Shell International, the London Eye, ITV, Guys & St Thomas's NHS Hospital Trust, Network Rail, Southbank Centre, British Film Institute, National Theatre, Kings College and London South Bank University. Iain was appointed an Honorary Fellow of the Royal Institute of British Architecture in 1999 and awarded an Honorary Fellowship at London South Bank University in 2003. Coin Street Community Builders won the Royal Institute of British Architecture's 2008 Client of the Year Award "for transforming the South Bank by building a genuine community in London's cultural quarter. For 8 years Iain was a board member of The Young Vic Theatre with responsibility for overseeing the successful re-development of the theatre. In 2012 Iain received a MBE for services to architecture and regeneration.

Peter Studdert

Peter is an architect and town planner currently working as an independent adviser on city planning and design based in Cambridge. He was formerly Director of Joint Planning for Cambridge's Growth Areas and Planning Director at Cambridge City Council, where he was involved in a number of award-

winning projects including the Accordia housing development that won the Stirling Prize in 2008. In the early part of his career he worked for the City of Westminster and the London Boroughs of Islington and Tower Hamlets. He is Chair of the Quality Review Panel for the London Legacy Development Corporation and is an adviser to English Heritage and Design Council Caba, as well as serving on a number of local design review panels. He is a past Chair of the Historic Towns Forum and was a founder member of the Urban Design Group. He is an Associate at Cambridge Architectural Research and a member of the Highbury Research Group in Housing and Planning at the University of Westminster.

Hugh Pearman

Hugh is architecture critic of The Sunday Times, editor of the RIBA Journal, an Honorary Fellow of the RIBA, and a vice-president of the Architectural Association. He was instrumental in establishing the Stirling Prize for architecture in 1996. He writes for many other media on architecture, art and design and is a frequent contributor to Architectural Record in the U.S.A. His books include the bestselling "Contemporary World Architecture", published by Phaidon. He is a frequent critical voice on radio and television and is a Visiting Professor in architecture at the Royal College of Art.

Aileen Wiswell MBE

Aileen has had a long career in the civil service covering over 34 years in a variety of roles and departments. Joining the Government Property Unit (GPU) in 2011, she led on "One Public Estate" taking it from pilot to business as usual within 12 months. Her current role within GPU is the Regional lead for North West, South West, West Midlands and Wales. She has responsibility for the rationalisation of the mandated civil estate, alongside departments, to achieve a fit for purpose estate that is best value and contributes to growth. This is achieved through placed based and vacant space strategies; programme management; promoting cohesive working; engagement with the wider public sector; working with local government, the NHS and other public bodies to share assets; co-ordinating disposals of surplus land and property; and promote growth through City Deals and One Public Estate pilots.

Lindsey Whitelaw

Lindsey is a Landscape Architect and founding partner of Whitelaw Turkington Landscape Architects which she set up in 1991 with Ian Turkington. The practice grew to develop a reputation for high quality award winning work and in 2008 was acquired by a Dutch engineering firm. Lindsey has a special interest in Public Realm, Community Planning, Urban Regeneration and the integration of Public Art into the environment. She was particularly interested in promoting the concept of shared space which led to the ground breaking scheme in Ashford Kent. Since retiring from the practice in 2011 Lindsey has built up an eclectic portfolio of work. As a freelance consultant she is involved in mentoring and advising design teams. She has qualified in Equine Assisted team building and leadership, is a patron of the Urban Design Group, is a member of the Olympic Legacy Quality Review Panel and sits on a number of Local Authority design review panels. In addition, having obtained a degree in Fine Art prior to becoming a Landscape Architect, she is currently working on a body of paintings and prints.

Civic Trust Awards Patrons

The Civic Trust Awards Patrons act as Ambassadors, promoting the scheme to industry and the general public.



Chris Wilkinson OBE RA

Civic Trust Awards Design Patron Chris Wilkinson OBE RA is founding partner and Principal of **Wilkinson Eyre Architects** who have won over 120 national and international design awards. These include Civic Trust Awards for the Arena and Convention Centre in Liverpool, which also received a Special Award for Evening Economy in 2009 and Liverpool One Masterplan which won the Special Award for Sustainability in 2010. Wilkinson Eyre Architects were announced as the RIBA Stirling Prize winners for two consecutive years in 2001 and 2002. Chris takes a strategic overview of each project from conception to construction and a special interest in key projects where his wealth of experience and clear design philosophy are invaluable. Chris also pursues academic interests through teaching, lecturing, writing and painting.



George Clarke

Civic Trust Awards Media Patron George Clarke is an architect and presenter of 'Restoration Man' and 'The Home Show' on Channel 4. Born and raised in Sunderland, from the age of 12 George wanted to be an architect. After studying at the University of Newcastle and University College London, George started his own practice, award winning **clarkedesai** which he left in 2011 to launch a new practice **George Clarke + Partners**. He is passionate about the way architecture can transform our everyday lives and his aim is to make architecture popular and accessible to the public. George has helped raise awareness of the Civic Trust Awards amongst the general public, encouraging them to participate in the scheme by volunteering as local community advisors. George also presents the Awards Ceremony in March each year.



AABC Conservation Awards National Panel

The AABC Conservation Awards Panel are a representative group of experts who make the final decision on the level of awards to be given, ensuring national consistency.

Ken Moth (Chair)

Ken spent some 40 years working in architectural conservation and adaptive re-use. Most of his career was spent with BDP Manchester where he was an architect director, retiring in 2010. He has been an active member of the Victorian Society since 1972 and is now an executive trustee and deputy chairman. He is a board member of the AABC Register and continues his keen interest and involvement in the historic built environment.

Chloe Granger

Chloe is an architect and SPAB Scholar, accredited with the AABC and an AABC Board member. Chloe has developed her skills as a conservation architect through

practical work on-site, followed by a scholarship with the SPAB studying the construction, philosophical development and repair of historic buildings. Chloe has worked on a large variety of projects with a multitude of clients, covering both pure conservation through as well as new intervention and contemporary new-build. Chloe is currently working in her new practice, OPUArchitecture, as well as holding a post as one of the Technical Advisors with the SPAB.

Simon Malam

Simon is an Associate Director at Donald Insall Associates, an AABC registered architect and AABC Board member. He has 15 years' experience working as a

conservation architect on the repair, alteration and adaptation of some of the country's most important historic buildings. His specialisms include timber-framed structures and places of worship, and he is incumbent architect at Bangor Cathedral.

Jill Channer

Jill is now an independent historic building and architectural glass consultant having spent some 45 years as a conservation professional in the public, private, academic and voluntary sectors. An accreditor assessing applications from the client perspective since the inception of the scheme in the mid-1990s, she is an AABC Board member.



Selwyn Goldsmith Award for Universal Design Judging Panel

Sponsored by Queen Elizabeth Olympic Park, in recognition of architect and founding figure of inclusive design, Selwyn Goldsmith. Mr Goldsmith wrote the groundbreaking manual *Designing for the disabled*, published in 1963, which became the indispensable access guide for built-environment professionals. Mr Goldsmith's book *Universal design*, published in 2000, outlined his shift in thinking from 'designing for disabled people' to 'universal design', which focuses on making buildings safe and convenient for use by everybody, including disabled people.



Simon Turton (Chair)

Simon is a Director at Aperis Building Consultancy, a Chartered Building Surveyor and has been involved in Access Consultancy for the last 14 years. His experience comes from a wide variety of differing Client Sectors covering new and existing buildings. He is the current Chair of Management Board of The National Register of Access Consultants and he regularly sits on their interview panel for new members. Simon has provided CPD seminars to a variety of organisations and has spoken at national exhibition events, promoting Universal Design and Disability Awareness. Through his role at the NRAC, he has also been involved in the lobbying of Government to promote the role and value of Access Consultancy. He provides consultancy advice on many areas, including Disability Policies and legislation, with advice on the reasonableness of implementing works related to access improvements. Advice on the application of best practice is provided for the design of new buildings and its interpretation in relation to existing environments.

Becky Goldsmith

Marriage to Selwyn Goldsmith in 1989 brought Becky into his world of access provision. His hemiplegia entrained a profound and broad education in the logistics of safely negotiating built and exterior environments. His ambulant and wheelchair-using disability was central to their life together. As his philosophy moved from 'for the disabled' in 1963 through the new architectural paradigm in 1997 to 'universal design' in his final book in 2000 and Becky wholeheartedly endorsed this progression, assisting Selwyn in writing the last two books. Becky and all of Selwyn's family wish to express their gratitude to The Centre for Accessible Environments and the Civic Trust

Awards for establishing this scheme thus ensuring that he will be immortalised through his work.

Iain McKinnon

Iain provides the client side lead on all aspects of accessibility and inclusive design for the London Legacy Development Corporation (LLDC) – the organisation responsible for Queen Elizabeth Olympic Park (QEOP) and sponsor of this year's Selwyn Goldsmith Award for Universal Design. His role is to ensure that everything delivered by LLDC, from buildings to live events, is accessible for all end users including disabled people, older people and people from diverse faith groups. New to the panel this year, Iain has a passion for good design that improves people's lives, is a consultant member of the National Register of Access Consultants and previously ran his own access consultancy.

Jane Simpson

Jane is Director of Jane Simpson Access Ltd is an Architect and a consultant member of the National Register of Access Consultants (NRAC). Throughout her career Jane has developed a broad range of expertise, working within a local authority background, private practice and planning department and has over two decades of experience in inclusion. She sits on the NRAC advisory group, is the RIBA's Specialist Practice Advisor on inclusion, representing the RIBA on the BS8300, Inclusive Design and CPD committees. She also a member of the School Client Forum and is currently undertaking fourteen CPD seminars nationally for the RIBA. She has acted as an Inclusion Design Assessor for the Civic Trust Awards for several years. She provides advice on a broad range of issues, often clarifying complex aspects of the Equality Act 2010, the Special Education Needs and Disability Act 2001 and other statutory and legislative information.

Kath Phipps

Katherine is Director of Communication and Technology at Action on Hearing Loss, (the new name for RNID), where she leads the team working on all aspects of communication for people with hearing loss, ranging from the development of new accessible equipment through to training sign language interpreters. She is also a board member of the National Register for Communication Professionals working with Deaf and Deafblind People (NRCPD). Katherine has a MSc in Inclusive Environments, and was previously on the management committee of the National Register of Access Consultants (NRAC), as well as a member of the Disabled Persons Transport Advisory Committee (DPTAC).

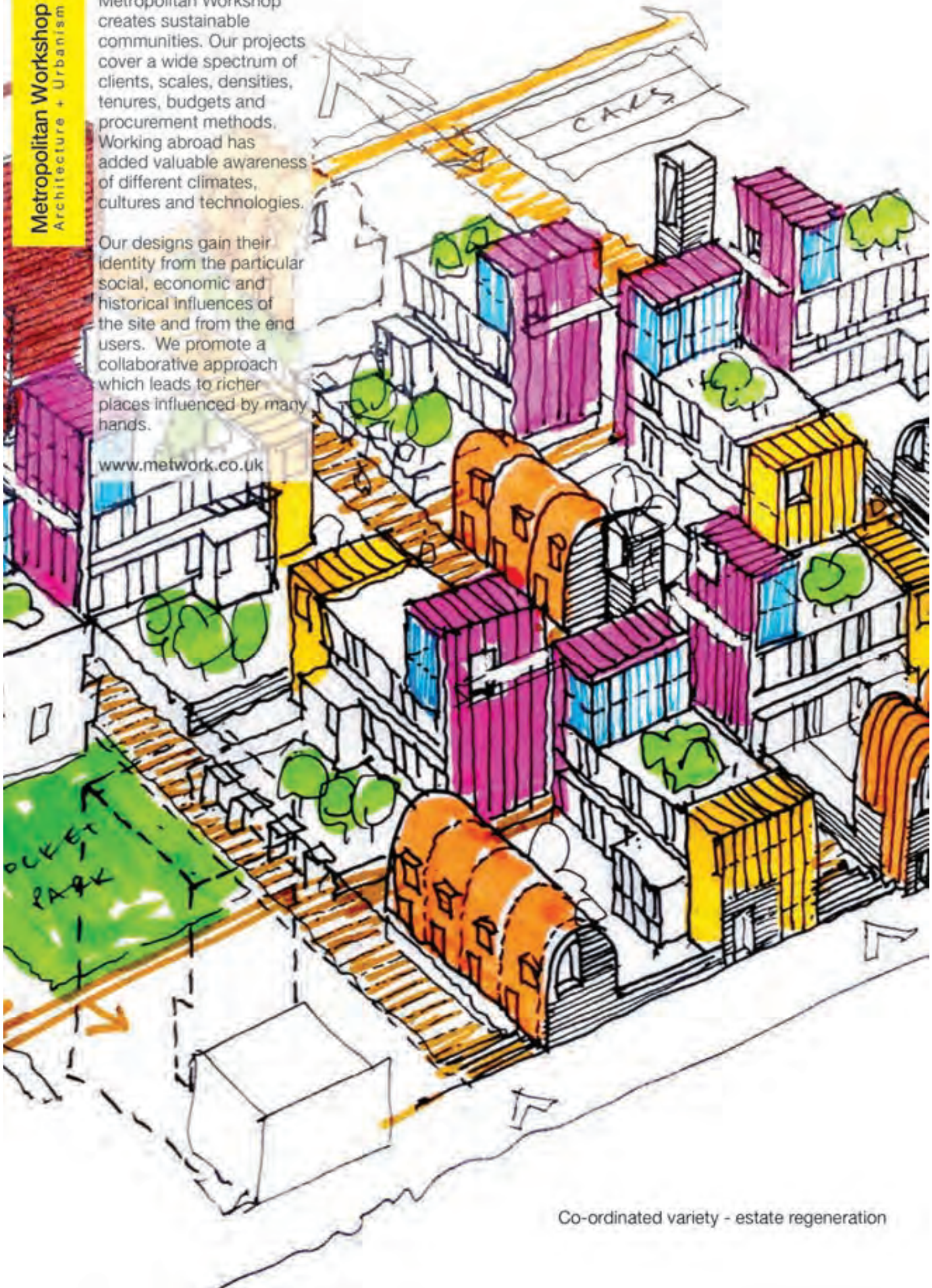
Pauline Nee

Pauline has 25 years' experience in architecture, and over a career spanning both the public and private sectors has specialised in conservation and access. Pauline spent many years as head of Southwark's Building Design Service. Under her leadership, the borough became a key proponent of public sector design. She subsequently worked at John McAslan and Partners, where she led the practice's Historic Building Unit. Most recently, Pauline worked with David Bonnett Associates, helping to progress the agenda of inclusive design practice, an interest she developed during her time at the London Borough of Islington, and when studying Access in the USA, funded by an RICS scholarship Pauline studied Building Conservation at the Architectural Association. She is currently a member of Islington's Design Panel, teaches students from New York University and gives an annual lecture on historic buildings at the Bartlett, UCL.

Metropolitan Workshop creates sustainable communities. Our projects cover a wide spectrum of clients, scales, densities, tenures, budgets and procurement methods. Working abroad has added valuable awareness of different climates, cultures and technologies.

Our designs gain their identity from the particular social, economic and historical influences of the site and from the end users. We promote a collaborative approach which leads to richer places influenced by many hands.

www.metwork.co.uk



Co-ordinated variety - estate regeneration

Comment

David Prichard Chairs the Civic Trust Awards National Panel and reflects on this year's entries.

Every project submitted for a Civic Trust Award is visited in the first instance by a team of Civic Trust's volunteer assessors, who are expert in the built environment as architects, planners, civic society members, access consultants and other disciplines. Despite the country's continuing economic challenges for which the construction industry is an important indicator, they were very busy this year. Over 200 schemes were visited and 130 referred to the National Panel of judges as potential projects to be awarded. Entries were spread across the regions but sadly fewer from Ireland where the recession has dramatically impacted on development. By sector, the residential entries were strong, the education schemes that were assessed seemed somewhat more accomplished than some projects in previous years, excellent civic schemes have come through and overseas entries give us some important precedents from which to learn.

The selection process is rigorous and pretty tough and the National Panel sees many sound projects that receive no accolades in this awards process but still make worthy additions to their communities. The National Panel has the onerous task of moderating local assessor's recommendations with cognisance of each project's challenges and with reference to benchmarks established in previous years of awards. This year the Panel had new members from government, client, planning, and landscape backgrounds, as well as journalism – and we were all envious of how many projects Hugh Pearman had visited, as editor of the RIBA Journal and Sunday Times architecture critic.

Civic Trust Awards take their lead from their communities, a fact that distinguishes them from other award schemes. Applications are submitted because the users are proud of their achievements and think their project to be an exemplar that will inspire others. With many consultants working abroad, overseas entries remind us of the international respect held for UK design standards and how award schemes raise public awareness of design and client expectations.

Some brief reflections by sector:

Offices: a perhaps unexpected consequence of local authority budget reductions has been a crop of new civic offices reflecting the need to sell sites and deliver more integrated services in compact, efficient and modern buildings; last year we saw Brent's offices, this year it was Blackpool's with a fine addition in a prominent position in the city. The re-cladding in brickwork of a commercial office building in Page Street, Westminster is a pleasant surprise from a sector that for decades has relied upon "off the shelf" cladding solutions and now also sees the virtue of addressing the design challenges of context with solidity rather than simplistic transparency that has contributed so much to the "everywhere and nowhere" feel of so many business districts.

Residential: everyone knows of the urgent need to create homes that are within economic reach to rent if not to buy, and how such forces have raised densities and land values and how the viability tests seem to reduce the affordable housing percentage in so many developments. The Aylesbury estate, an emblem of what was wrong with 1960's design and subsequent decades of housing management, is at last being re built and the first phase bodes well but the

affordable percentage seems somewhat low, which is a reminder that the private sector cannot possibly provide the social housing we need and that government funding is essential.

The **Chester Balmore** scheme in Camden is an excellent example of thoughtful energy conscious design that fits well in its context; and sad that its architect Rick Mather died before it was completed. The cluster of like-minded families who built and live in 1-6 Copper Lane in Hackney, albeit at the luxury end of the market, illustrates a gap in the market for a more sharing life-style and elsewhere one can see there is a desire for multi-generational homes – but there are no such products on the market. The Private Rented Sector is one of several new models needed to tackle our chronic housing shortage and we hope to see innovations emerging in both layouts and home plans in coming years.

The Panel gained great optimism from the **Abode** scheme which is part of Cambridge's expansion; it is an excellent example of an innovative site layout generating several different character areas but with common materials achieving a unified composition. It is rightly lauded with many awards and a good example of what a house builder like Countryside can achieve working closely with experienced architects like Proctor Matthews. The Panel is very aware that these examples are from the south east where values support higher quality so it was pleased to see a good contemporary mews of homes in South Wales.

Hotels are rarely entered as their procurement often allows their architects little opportunity to make the standard plan layouts into decent buildings which respond positively to their context. The restoration and conversion at the Shepherds Bush Hotel is a good news story for that area. Looking abroad we were pleased to see the Waldorf Astoria chain in Beijing has invested in a fine building that tunes into its cultural context and is a contemporary version of those imposing grand hotels of bygone eras.

Health: Maggie Centres are an oeuvre of their own and three were entered this year – the Merseyside scheme has a wonderful calmness from its setting in the landscape, whereas the Lanarkshire scheme achieves its internal calm from the choice of materials. The Health Centre in Newham on Liberty Bridge Road is an excellent example of urban community architecture.

Education: there was a good array of schools and academies several making well considered atria spaces that appeared to work well. The LSE's Saw See Hock Student Centre is a masterly composition on an incredibly constrained site where O'Donnell + Tuomey Architects have surpassed their client's expectations with an exceptional, striking building.

Civic: in an era of hundreds of libraries being closed it is heartening to see the City of Birmingham invest in a major multi-function library facility that has proved immensely popular. The Everyman Theatre in Liverpool, winner of the last Stirling Prize, is praiseworthy on many accounts and a classic Civic Trust Award project. Galleries and Museums do attract higher budgets than other sectors but justifiably for the civic focus they create and longevity expected of a cultural destination. Looking across to Moesgaard Museum in Denmark and Sogn and Fjordane Art Museum in Norway we saw in both designs clear inspiration from their landscape and climate. Such

clarity looks simple but in reality only designers know how difficult it is to achieve.

Public Realm: the range of schemes spans from the long needed Kings Cross Square – at last we have a London terminus with serious civic arrival space enabling appreciation of Victorian railway architecture – to the regions, where Stoke on Trent's Bus Station brings style and dignity to what is too often a bleak and undistinguished building type.

Overseas: several overseas schemes have been mentioned already, but one stands out as a real beacon and that is the Via Verdi residential and mixed use development in New York by Grimshaw. There is much to learn from this project in terms of the brief and how tenures and rent levels make it accessible to a range of key city workers.

Temporary Installations: this year the Pro Tem entries were exciting – the City of London is using its public realm as a canvas for rolling out an arts programme; the Clerkenwell installation celebrating the many Smiths that made things there in Victorian days; and the incredibly moving Blood Swept Lands and Seas of Red, for a while transformed the moat at the Tower of London into an extraordinary testament to war's sacrifice.

Community Impact: two scheme attracted our attention. Spotlight Youth Space in Poplar is in the shadow of Canary Wharf's glittering wealth where it offers local youth a chance to explore drama, music and the arts and to nurture emerging talent. In Brixton, the Black Cultural Archives is a dignified home on a prominent site to celebrate the cultural influence on British society of the Windrush generation.

The industry's skills and ingenuity will continue to be tested in the rest of this decade of seemingly unending economic constraint and increasing challenges, and we must somehow succeed in doing more with less. The shape of local government has changed fundamentally and the next parliament will most likely dramatically reduce its capacity still more with consequent increased vulnerability of services and its ability to maintain and enhance our civic realm – the public experiences and remembers our streetscapes and public places more than they do individual buildings so every town's character could suffer. These stringencies do bring renewed emphasis to our clients' project briefs and the need for all to reduce energy consumption and minimize maintenance costs. The adage 'long life, low energy and loose fit' still seems fresh, but many may not know it was the call of the RIBA President in 1974 – at least two recessions ago!

The National Panel wishes to thank all the applicants for their support and in particular all of the sponsors of the Civic Trust Awards whose continuing support enables this important awards programme to thrive. Our thanks also to the Assessors for their time visiting, discussing and writing their reports. Their time is generously given with the laudable intent of promoting excellent buildings and places for which future generations may thank us.

None of this would have happened without clients – it is their ambition, funds and tenacity that we should admire, and their commitment to support innovation by appointing talented designers to realise their projects.



Selected by National Panel members as their favourite scheme from this year's Award winning projects

Abode at Great Kneighton

Cambridge, Eastern

Architect

Proctor and Matthews Architects

Client

Countryside Properties

Main Contractor

Countryside Properties

Structural Engineer

Ramboll UK

Services Engineer

Ramboll UK

Landscape Architect

BBUK Landscape Architecture

Quantity Surveyor

Countryside Properties

The scheme consists of over 300 homes arranged as a sequence of spaces and housing types, responding to the existing geography of the site, providing a rich variety of typologies and tenure and is part of a major new community providing extensive open space and new community facilities in the Cambridge Southern Fringe growth area. The scheme consists of a hierarchy of spaces and housing types to suit different parts of the development. This approach gives form to existing infrastructure and a formal sense of arrival at the entrance to the site, before moving sequentially towards a more relaxed architectural language and looser density at the rear of the site, where it is integrated with the neighbouring countryside. High quality public realm and a series of pleasant communal spaces across the development have been provided. In the mews streets zone, the formal landscaping of the Great

Court gives way to a series of parallel green connecting corridors that run perpendicular to the terraces, creating pleasant shared spaces and pedestrian routes between the houses. These "landscape ribbons" also provide a linear route through the development, connecting the formal landscape of the Great Court to the open countryside at the edge. Within the simple and controlled palette of materials used across the development, a common element is the base palette of "Cambridge" stock brickwork. A variety of split and partially projecting patterns is used to articulate scale, celebrate entrances and give emphasis to important townscape junctions within the masterplan. Panels of patterned brick are used throughout to model and give depth to what would otherwise be flat facades. This approach serves to support the hierarchy of streets and provide individual buildings with their own identity.

TIM CROCKER





"The careful detailing of the brick and timber clad elevations contributes to a palpably rich setting which has been very effectively complemented by a diverse horticultural landscape."





Presented to an exemplar restoration project, or new build within a conservation area

Somerset House West Wing and Ground Floor East Wing

Westminster, Greater London

Applicant

Forme UK LLP

Interior Architect

Forme UK LLP

Client

Somerset House Trust

Quantity Surveyor

Godfrey Dallas Ltd

Stair Designers (West wing)

Eva Jiricna Associates

Main Contractor

Coniston Ltd

Services Engineer

Inspire Consulting

Planning Consultant

Alan Baxter & Associates LLP

Structural Engineer

Alan Baxter & Associates LLP

Heritage Colour Consultant

David Mlinaric

The scheme is part of the third and fourth phases of the renovation of the Grade 1 listed buildings. When the Inland Revenue vacated the ground floor of the East wing and the entire West wing after 150 years of occupation, the design team were briefed to convert the spaces for new use. As with the South Wing, improving circulation within the East Wing was the first challenge. A cluttered layout was quickly turned into a fluid ensemble of interconnecting galleries and commercial spaces. All the lightweight partitions installed in the 1960s together with other significant structural interventions were removed and the original wall features reinstated, so that the interior could return to glory. The north end of the West wing housed a particularly cumbersome arrangement of stairs and corridors creating land locked spaces and poor accessibility. The team took a decision to mark this zone of the wing by making major structural intervention and inserting a signature staircase design by Eva Jiricna Architects and constructed

within the project contract. This restoration now unlocks the fee generating potential of the estate, while also restoring its authentic quality. Significant design energy was given to devising the inner hall lobby spaces of the East Wing. Many of them were subject to much needed structural alteration to meet the demands of the Trust, such as the removal of lifts and shaft walls. A new central hall of the east wings was created to enhance the visitor experience of the ground floor. Its soft curves and views through the elliptical voids offer a counterpoint to the experience of striding through the enfilade of door-ways in the adjacent galleries. After a long period of indifferent remodelling and limited maintenance of the fabric by previous occupiers, interior spaces have been transformed with a 'light touch' approach to refurbishment and a 'non-intrusive' solution to modern interventions. Somerset House is now able to hold world class exhibitions and house some outstanding restaurants and creative workspaces.



“This project has restored Somerset House’s natural ability to delight with exquisite visual experiences”

The Michael Middleton Award is a memorial and tribute to a person who was instrumental in helping to establish the Civic Trust and some two years later, in 1959, the Civic Trust Awards – highlighting excellence in environmental design.

This year’s winner is the conservation and restoration of the west wing and ground floor east wing of Somerset House in Westminster’s Strand Conservation Area. As one of London’s finest and much loved historic buildings, designed by Sir William Chambers in 1775 and a

later wing added by James Pennethorne in 1849, this project is the latest exemplary renovation of a major cultural centre in the capital.

This scheme epitomises Michael Middleton’s philosophy of good practice in Conservation Areas and ensuring the wellbeing of our historic Towns and Cities.

Victor Rose
Civic Trust Awards National Panel





Presented to an exemplar project that demonstrates excellent sustainability credentials in terms of overall design parameters, material selection, construction methods and long term energy consumption

Chester Balmore

Camden, Greater London

Architect

Rick Mather Architects

Client

London Borough of Camden

Planner

London Borough of Camden

Project Manager

McBains Cooper

Services Engineer

Mott MacDonald

Environmental Consultant

WARM

Structural Engineer

Haskins Robinson Waters

Chester Balmore is an innovative mixed-use development, designed to Passivhaus standards to provide a total of 53 dwellings, over half of which are affordable homes for Camden residents. This has been achieved in a very challenging setting and with a design that is both contemporary and sensitive to the historic setting in which it is located. Developed as part of Camden's Community Investment Programme to provide new homes within the borough it is the first time in 30 years that Camden have acted as both developer and landlord. The Council is now developing housing for sale, the proceeds from which will be invested directly back into those neighbourhoods in the form of new low-cost housing, investment in the public realm and open spaces, and the provision of new retail and community facilities. Located in the Dartmouth Park Conservation Area, to the south of Highgate

Cemetery, the design is a sensitive response to the context of Highgate Newtown and surrounding streets. The innovative layout for the site combines terraces, stacked maisonettes, flats, retail and community space into a series of articulated blocks that negotiate between the adjoining Victorian terraces, public park, Victorian library and mid-seventies Modernist development opposite. The design exploits the sloping topography of Highgate to maximise efficiency and provide all residents with their own private outside space and direct street access to their front doors. A unified brick palette gives a coherent and collective identity to the development. The innovative design solution is backed up by an innovative approach to sustainability and is one of the largest Passivhaus multi-dwelling developments in the UK, promising to offer residents a truly sustainable way of living.

ANDY MATTHEWS / JIM STEPHENSON





“Chester Balmore is proof that high quality sustainable homes can be built in complex inner city sites whilst being highly specific to context and historic settings”

Chester Balmore is a development of 53 dwellings with community accommodation that satisfies Passivhaus standards. The scheme has been designed with an insulated envelope; walls, roof, floors, and reasonably sized windows, providing good natural light. The windows are openable so that the buildings will not overheat in summer and the building is around twice as airtight as required by modern building regulations.



The dwellings are closely spaced so that heat generated through general usage of the buildings, such as computers, refrigeration, TV, cooking and lighting after dark can contribute to keeping the building warm. There may still be a small requirement for heat on the coldest days and for domestic hot water, but the scheme has incorporated a very efficient small boiler with distribution pipework that delivers the residual heat to the properties. On the roof there are PV cells to supply electrical energy to the development and the grid, with advice available to tenants on energy use.

Max Fordham
Civic Trust Awards National Panel





Presented to an exemplar project that has demonstrated how successful community engagement can help deliver the highest standards of design whilst meeting the needs of local people.

Black Cultural Archives

Lambeth, Greater London

Architect

Pringle Richards Sharratt

Client

Black Cultural Archives

Universal Design Consultant

Making Access Work

Main Contractor

Roof Limited

Owner

London Borough of Lambeth

Project Manager

The Clarkson Alliance

Quantity Surveyor

Turner & Townsend

Services Engineer

Max Fordham

Structural Engineer

Alan Baxter Associates

Project Funder

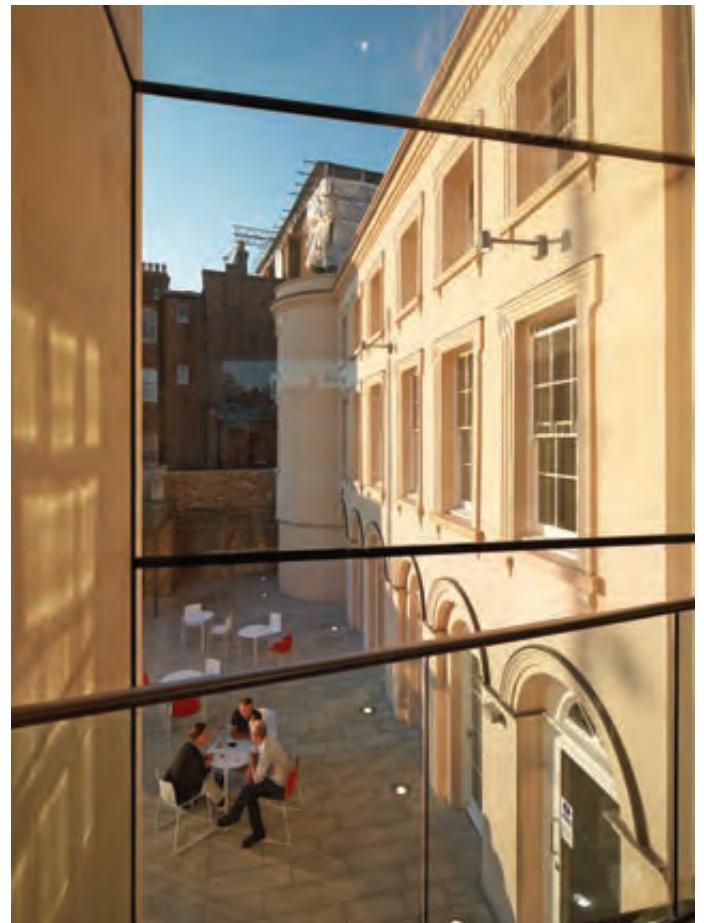
Heritage Lottery Fund

This new cultural landmark is the first purpose built home for Black Cultural Archives (BCA), the leading independent archive collection dedicated to history and culture of people of African and Caribbean descent in Britain. The building provides facilities for BCA's core activities of education, research and community engagement. The scheme has transformed Raleigh Hall, a derelict Grade II listed building, into a state-of-the-art heritage centre ready to meet the ambitions of the organisation providing a local, national and international presence. The opening of the building in the heart of Brixton has made an important impact on the local community. It is the coming home to

Brixton of something that grew out of the local community in the first place. This special connection started in 1981 in Coldharbour Lane where they were originally founded as an independent, voluntary and locally supported archive. Over the last 32 years, much of the archive collection has been amassed by donations from volunteers and local organisations. They now hold a vast amount of materials that documents the rich diversity and history of Brixton and its local community. The new community facility completes the wider regeneration of Brixton Central Square including a direct connectivity with the new outdoor public space.

EDMUND SUMNER





“The building makes an outstanding contribution to the quality and appearance of the environment. Excellence is demonstrated through good design and the local community benefit at social, cultural, environmental and economic levels.”



Presented to an exemplar project, that has demonstrated excellence in overall design and construction utilising brick. Sponsored by Derwent London

Saw Swee Hock Student Centre

Westminster, Greater London

Architect

O'Donnell + Tuomey

Client

London School of Economics and Political Science

Main Contractor

Geoffrey Osborne Ltd

Structural Engineer

Horgan Lynch

Planning Consultant

Turley Associates

Project Manager

Turner and Townsend

M&E Engineers

BDSP Partnership

Acoustic Consultant

Arup

Fire Engineering

Arup

Quantity Surveyor

Capita

Approved Building Control Inspector

Carillion

Archaeologist

Gifford

BREEAM

BSRIA

CDMC

Gardiner Theobald

The multi-functional building includes a venue, pub, learning café, media, prayer, offices, gym, careers, dance studio and social spaces, bringing student facilities together under one roof. A site specific sculptural concept for the architectural design was developed, which resulted in the folded, chamfered, canted and faceted façade which operates with respect to the Rights of Light Envelope and is tailored in response to specific lines of sight along approaching vistas and from street corner perspectives. The surface of the brick skin is cut out along fold lines to form large areas of transparent glazing framing views in and out from street to room. Like a Japanese puzzle, the design is carefully assembled to make one coherent volume from a complex set of interdependent component parts. The building is designed to embody the dynamic character of a contemporary Students' Union. The complex geometries of the site provided a starting point for an unconventional arrangement of irregular floor plates, each one particular to its function and each working into the next by an intricate system of trapezoidal spatial configuration. Space flows freely in horizontal plan and vertical section, with stairs gently twisting and slowly turning to create a variety of diagonal break-out spaces at

landings and crossings throughout the building. The existing buildings on and adjacent to the site are built in bricks of varied and lively hue and the design relates to the resilient characteristic of the city's architecture with familiar materials made strange. The exterior walls are clad with bricks, used in a new way, with each brick offset from the next in an open work pattern, wrapping the walls in a permeable blanket that will create dappled daylight in particular spaces and, at night, when all the lights are on inside, the building will be seen from the streets like a glowing lattice lantern. The faceted facade of the building is composed of both solid and perforated brick areas and glazed screens. The perforated planes are constructed from a single leaf of brickwork with spaces in the flemish bond pattern to allow light to both infiltrate the interior spaces and filtrate out at night to create a pattern effect. The openwork brickwork is constructed in front of glazed screens that seal the building and incorporate opening sections to naturally ventilate the building. The extent of perforation has been developed to maximise daylight into the building.

DENNIS GILBERT / VIEW





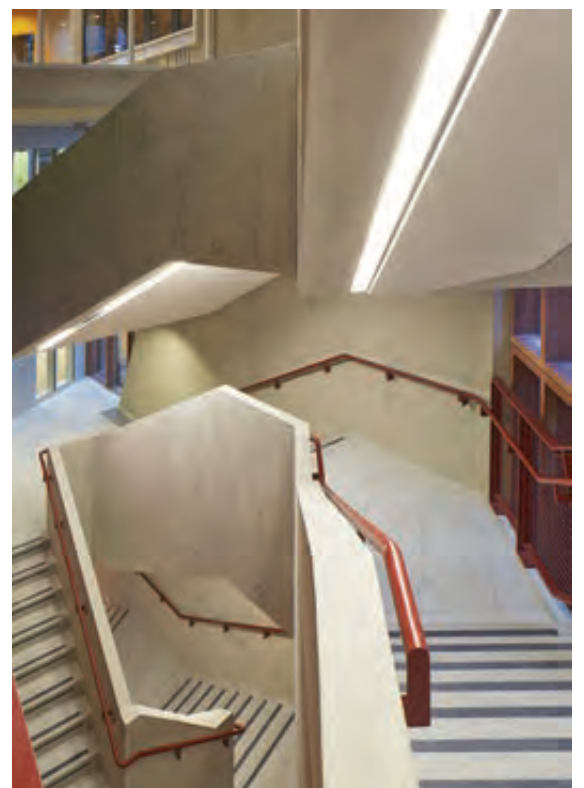
“This scheme is exceptional as it has successfully integrated many different uses in a functional and sophisticated building. It should act as an inspiration for other student buildings.”

The Saw Swee Hock Student Centre is a clear winner. The brick here not only reflects the materiality of the local context in an inventive way but it is also deployed to interesting effect – defying its sense of solidity with an elegant lightness in the use of bold faceted geometry and brick perforated tracery. The brick flows inside and is offset with complementary materials of concrete, steel and timber nodding to Kahnian principles in a dynamic way.

The architects have achieved a superb and beautifully crafted building and client, planners and contractors deserve credit for their commitment to an outstanding contribution to the city fabric.

Richard Baldwin
Head of Development
Derwent London

DERWENT
LONDON





Presented to an exemplar temporary structure or installation. Sponsored by Metropolitan Workshop

Blood Swept Lands and Seas of Red

Tower Hamlets, Greater London

Artist

Paul Cummins

Maker

Paul Cummins

Concept Originator

Paul Cummins

Host Venue & Collaborator

Tower of London

Blood Swept Lands and Seas of Red installation took up home in the moat at the Tower of London in 2014. The installation has been widely recognised as a monument to the centenary of the First World War and has touched members of the public around the globe. The huge art installation consisted of 888,246 ceramic poppies, one for each British and Colonial fatality during the Great War, it stretched around the dry moat of the Tower of London, rising and falling around the entrances and exits, creating a vibrant display for all who visited from August through to November 2014. International ceramic artist Paul Cummins had the thought of creating this astonishing artistic display

after looking through some old records in Chesterfield and reading the will of a Derbyshire man who joined up and died in Flanders. His words touched him and Paul was inspired to produce a ceramic poppy to honour every death in the British forces of the First World War. The scale of the installation was intended to reflect the magnitude of such an important centenary and create a powerful visual commemoration and more than 5 million people are estimated to have visited during the four months it appeared in the Tower's moat. All of the poppies that made up the installation were sold, raising millions of pounds which was shared equally amongst six service charities.

RICHARD LEA-HAIR / HISTORIC ROYAL PALACES





The Blood Swept Lands and Seas of Red

By Anon – Unknown Soldier

The blood swept lands and seas of red,
Where angels dare to tread.
As I put my hand to reach,
As God cried a tear of pain as the angels fell,
Again and again.

As the tears of mine fell to the ground
To sleep with the flowers of red
As any be dead

My children see and work through fields of my
Own with corn and wheat,
Blessed by love so far from pain of my resting
Fields so far from my love.

It be time to put my hand up and end this pain
Of living hell, to see the people around me
Fall someone angel as the mist falls around
And the rain so thick with black thunder I hear
Over the clouds, to sleep forever and kiss
The flower of my people gone before time
To sleep and cry no more

I put my hand up and see the land of red,
This is my time to go over,
I may not come back
So sleep, kiss the boys for me”

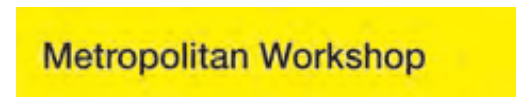


The Pro Tem Special Award is sponsored by Metropolitan Workshop LLP to draw attention to innovative temporary installations.

This year’s winner is the incredibly moving Blood Swept Lands and Seas of Red, which, for a while, transformed the moat at the Tower of London into an extraordinary testament to war’s sacrifice.

David Prichard

Co-Founder
Metropolitan Workshop





Presented to an exemplar project in Scotland. Supported by The City of Edinburgh Council and Glasgow City Council

Maggies Cancer Caring Centre Lanarkshire

North Lanarkshire, Scotland

Applicant

Reiach and Hall Architects

Client

Maggie's Cancer Caring Trust

Landscape Architect

Rankin Fraser landscape architecture

Main Contractor

John Dennis & Company

Quantity Surveyor

CBA (Edinburgh)

Services Engineer

KJ Tait Engineers

Structural Engineer

SKM

Lighting Design

Speirs and Major Associates

The Centre sits in the grounds of the former Airdrie Estate, bequeathed to the people of Airdrie in 1919 by Sir John Wilson to become a maternity hospital. In a gesture that attempts to reinstate the idea of a boundary to the hospital estate, the new Maggies embraces two detached stands of mature lime trees with a finely articulated brick wall, once more bringing a sense of continuity and enclosure to this northern edge. At its heart, the design is simply a tale of enclosed gardens, with beautifully expressed elements and due care to detail. The garden walls of the new Centre conceal a modest low building that gathers together a sequence of domestic scaled spaces, both internal and external.

The external courts catch sunlight, creating sheltered sitting out places, sitooteries. Visitors enter a quiet simple space, an arrival court, defined by brick walls and two lime trees. Interior spaces have varying degrees of enclosure relevant to the communality or privacy required for a particular group activity or private discussion. The illusory qualities of reflections in the glass sided interior courtyards and bronze coated light reflectors help moderate the transparency between spaces.

DAVID GRANDORGE





“It is a building with a narrative that is suitably thoughtful and poetic for its users and makes an outstanding contribution to the quality and appearance of the built environment.”



• EDINBURGH •
THE CITY OF EDINBURGH COUNCIL





Presented in recognition of architect and founding figure of universal design, Selwyn Goldsmith to an exemplar project that has demonstrated excellent universal design principles. Sponsored by Queen Elizabeth Olympic Park.

Library of Birmingham

Birmingham, West Midlands

Client
Birmingham City Council

Architect
Mecanoo

Interior Designer
Mecanoo

Landscape Architect
Mecanoo

Project Manager
Capita Symonds

Structural Engineer
Buro Happold

Theatre Consultant
Theateradvies

Planning Consultant
GVA Grimley Ltd

Main Contractor
Carillion Building

Universal Design Consultant
Buro Happold

Acoustic Consultant
Buro Happold

Fire Engineering
Buro Happold

M&E Engineers
Buro Happold

Design Manager
AECOM Design Management

Much more than just a library, the Library of Birmingham is a place of learning, community, business, new experiences and new opportunities; it is simply a place to 'be'. Universal Design specialists and Birmingham City Council Access Office were involved from the beginning to ensure that people were placed at the heart of the design process and that the design would provide autonomy and choice to the city's diverse population, and provide for flexibility in use. Deploying an all-encompassing strategy, a world class standard of universal design has been achieved in the development and delivery of the Library that meets and exceeds the requirements of national

and local planning policy. The library is an inclusive and welcoming building for all visitors, enabling and encouraging everyone to use all of the facilities on offer. The design team has ensured that all challenges to inclusion and access, whether individual, cultural, emotional, institutional, intellectual, physical or sensory have been 'designed out'. All of the design decisions have taken full account of accessibility for all visitors and staff. Through constant, active consultation with the users of the Library, the requirements of diverse groups have been holistically integrated by the design team, so that aspirations including the 'culture' or 'feel' of the building are acknowledged.

CHRISTIAN RICHTERS





“The Library of Birmingham is a fine example of an inclusive well designed public building which meets the needs of a diverse community of users and visitors.”



This year has brought an exciting development in the history of the Selwyn Goldsmith Award. The Queen Elizabeth Olympic Park with the London Legacy Development Corporation have generously agreed to sponsor this tribute to my husband which firmly signifies their dedication to universal design in action. Their decision has brought great joy to all our family and would, I am certain, have gladdened Selwyn’s heart.

Once again, selecting our choice of winner for 2015 has demonstrated ever-greater advances in the application of universal design principles to the design of an astonishing variety of new schemes. It becomes harder to choose between varying degrees of excellence among the finalists. Any of them could have won this award just a few years ago. But standards continue to rise and it seems that it is possible to improve on perfection. There could be no greater acknowledgment of Selwyn’s achievement.

Becky Goldsmith
Selwyn Goldsmith Award Panel Member



There were a number of reasons why the Library of Birmingham stood out as an exemplary model of universal design. It not only showed an impressive range of integrated accessible features and facilities but it was clear that a lot of meaningful consultation and engagement had been undertaken with local users, including hard to reach groups. By considering inclusion as an important part of the visitor experience as a whole and not just in the building fabric, the team have delivered a building that is as functional and welcoming for all visitors and staff as it is visually striking. It is the creation of a community facility that offers such an inclusive visitor experience that led it to be a deserving winner of this year’s Selwyn Goldsmith Universal Design Award.

Iain McKinnon
Senior Manager – Accessibility and Inclusive Design
Queen Elizabeth Olympic Park





Projects that make an outstanding contribution to the quality and appearance of the built environment. Award level schemes demonstrate excellence in architecture or design, sustainability, universal design and provide a positive social, cultural, environmental or economic benefit to the local community.

Daniels Spectrum

Toronto, Canada

DIAMOND SCHMITT ARCHITECTS



Applicant
Diamond Schmitt Architects

Architect
Diamond Schmitt Architects

Owner
Regent Park Arts Non-Profit Development Corporation (RPAD)

Developer
Daniels Corporation

Tenant
Artscape

Landscape Architect
NAK Design Group

Project Manager
Daniels Corporation

Quantity Surveyor
Krcmar Surveyors

M&E Engineers
Smith and Andersen Consulting Engineers

Structural Engineer
Read Jones Christoffersen

Theatre Design
Fisher Dachs Associates

Acoustic Consultant
Jaffe Holden Acoustics

Fire Engineering
Randal Brown Associates Ltd

Transport Consultant
BA Group

Sustainability Consultant
Halsall

Civil Engineers
Sernas Associates

Canada's largest public housing project in downtown Toronto is a cultural hub for the Regent Park neighbourhood, bringing together community-based arts and cultural groups and provides professional performance, rehearsal, learning and social enterprise space where none previously existed. The three-storey facility anchors a key intersection of the revitalized former low-rise community, to provide 5,115 rent-g geared-to-income and market rate residential units. Daniels Spectrum is rooted in nurturing talent, community outreach and providing a sustainable funding model for future growth. It is also about celebrating new programming initiatives in a neighbourhood undergoing radical transformation, mounting culturally diverse events in world-class facilities and welcoming the city of Toronto to a new cultural destination. Community involvement is integral to the ongoing urban renewal of Regent Park. A high level of engagement was essential in the development of Daniels Spectrum, involving seven not-for-profit tenant groups.

FKI Tower (Federation of Korean Industries)

Seoul, Korea

NAMGOONG SUN



Architect
Adrian Smith + Gordon Gill Architecture

Client
Federation of Korean Industries

Main Contractor
Hyundai Engineering & Construction Design

Local Architect of Record
Chang-Jo Architects

Structural Engineer
Thornton Tomasetti

M&E Engineers
Environmental Systems Design Inc

Civil Engineers
V3 Companies

Cost Estimator
Construction Cost Systems

Landscape Architect
SWA Group

Vertical Transportation
Fortune Consultants Ltd

Fire Engineering
Rolf Jensen & Associates

Façade Maintenance
Lerch Bates

Wind Engineering Consultants
Rowan Williams Davies and Irwin Inc

Acoustic Consultant
Shen Milsom Wilke, Inc

Local Structural Engineer
Dong Yang Structural Engineers Co. Ltd

Local M&E Engineers
Hanil MEC. Engineering Co. Ltd

The new headquarters, located on Yeoi-Dae-Roh the main through-road in Seoul, is an important addition to the skyline and is a prominent fixture among the wall of marquee buildings. 240-metre tower features an innovative exterior wall, designed specifically for the project, with a unique skin which helps reduce internal heating and cooling loads, while collecting energy through photovoltaic panels. The result is a unique folded exterior texture that is both purposeful and visually distinctive. The Tower includes several indoor garden/atrium spaces that enhance the workplace environment with natural elements of wood, bamboo and other native plants. The interior of the building takes advantage of the floor-to-ceiling windows of the exterior wall, offering an abundance of natural light to office spaces and corridors, as well as extensive views of neighbouring Yeoido Park, the Han River and the surrounding city. The sculptural podium piece is surrounded by landscaped courtyards for public use and includes a banquet hall, a central restaurant and a conference centre. The Tower has become a centrepiece of Seoul - a fantastic place to work as well as an inspiring place to view the surrounding city. FKI Tower is what a modern office building should be: intelligent, high-performing, and forward-looking, while still exhibiting timeless and enduring qualities.

Moesgaard Museum

Højbjerg, Denmark

JENS LINDHE



Owner and Client
Moesgaard Museum

Architect
Henning Larsen
Architects

Interior Designer
Henning Larsen
Architects

Exhibition Designer
Moesgaard Museum

Landscape Architect
Kristine Jensens
Tegnestue

Main Contractor
MT Højgaard and
Lindpro

Engineer
COWI

The new Museum grows out of the hilly landscape of Skåde outside Aarhus, Denmark. The building seems integral to the landscape, which is an unusually well-preserved cultural area with ancient burial sites and field systems dating back to the Iron and Middle Ages. The museum offers scenic views, public spaces, and first-class exhibitions on cultural history. With its bright courtyard gardens, terraces and small cave-like “houses-in-the-house”, the museum invites various new and alternative types of exhibition. The heart of the building is the foyer, with a café and outdoor service. From here, the terraced underworld opens up to the light that streams in from the roof garden and the impressive view of the Aarhus Bay. The landscape of grass, moss, and flowers in bright colours that cover the sloping roof of the museum appears as a powerful visual landmark. As a new hill amongst the old, the roof blurs the distinction between building and landscape, offering visitors a new area from which to appreciate the museum’s rural surroundings. The museum also acts as a public space, hosting a range of outdoor activities, such as picnics, barbecues, lectures, and traditional Midsummer Day bonfires during summer. In winter, the roof transforms into one of Denmark’s most exceptional sledding hills.

Sogn & Fjordane Art Museum

Førde, Norway

JIRI-HAVRAN



Client
Sogn og Fjordane
Fylkeskommune

Architect
C.F. Møller

Services Engineers
Sweco Norge AS
iVest Consult

Main Contractor
Åsen & Øvrelid

Owner
Sogn og Fjordane
Kunstmuseum

Located centrally on the bank of the Jølstra River, along the main road Langbruvegen, the building acts as a cultural institution and embraces the entire surrounding area. The museum is part of a master plan to revitalize the urban centre and features a residential building and an office building as well as the museum. The Sogn and Fjordane Art Museum draws upon the distinctive landscape for its architectural expression, lying like a crystal-clear block of ice that has slid down from the surrounding mountains. The crystalline form provides an asymmetrical plan solution, with varying displacements in the façade. This is further accentuated by a network of angled lines, reminiscent of fracture lines in ice. The facade is clad in white glass. The network of lines also defines the irregular window apertures. In the evening these lines are illuminated, creating further variation in the façade’s expression so that the museum lies like a sparkling block in the middle of the town’s darkness. The unified construction on the site adds a new condensed urban environment to the city in which its vocabulary draws inspiration from the great, all-embracing landscape to which the city subordinates.



Via Verde - The Green Way

Bronx, New York, USA

DAVID SUNDBERG, ESTO



Clients

Phipps Houses
Jonathan Rose Companies

Architects

Dattner Architects
Grimshaw Architects

Landscape Architect

Lee Weintraub Landscape
Architects

Main Contractors

Bowmer & Kirkland Ltd
Lettire Construction

Structural Engineers

Robert Silman Associates
Ettinger Engineering
Associates

Civil Engineers

Langan Engineering

Geotechnical Engineer

Pillori Associates

Lighting Consultant

Domingo Gonzalez
Associates

Exterior Wall Consultant

Front Inc.

Solar Consultant

Bright Power

Energy Consultant

Association for Energy
Affordability

Commissioning Agent

Dome Tech

This mixed-use, mixed-income affordable housing development, located in the Melrose neighbourhood of the Bronx in New York City, provides much-needed healthy, affordable, innovative urban living for residents and is an important component in the revitalization of the area. Arranged on a long, narrow, former-brownfield lot, Via Verde activates the challenging site with a development that wraps around the perimeter, creating and framing open space for the residents' use. An integrated approach enabled the project to creatively address site constraints, navigate the public approvals process, and become a beacon for this developing community. The 222 apartments include 71 work force housing cooperatives for residents earning 80-100% of the Area Median Income (AMI) and 151 low-income rentals for residents earning 60% or less of AMI. Intended as a new model for urban housing, Via Verde demonstrates advances made possible by collaborative partnerships.

Waldorf Astoria

Beijing, China

SHUHE



Architect

Adrian Smith + Gordon
Gill Architecture

Client

COFCO Limited

Associate Architect

Beijing Institute of
Architectural Design Co
Ltd

Main Contractor

China State Construction
Engineering Corporation
Ltd

Located in the heart of downtown Beijing, China, this 176-room contemporary hotel is stylistically influenced by the Forbidden City, China's nation's most important historical treasure. Attention to detail was crucial to the design. The vertical frame and the roof eave frame are shaped, detailed and strongly connected at the corners to echo the profile of the traditional Chinese roof soffit silhouette. The super frame, connecting the roof and anchoring building corners, successfully recalls the symmetry and steady character of Chinese traditional architecture. The hotel has quickly become a gem for the community, bringing new tourism, reinvigorated the retail and dining experiences of the neighbourhood and bolstering the areas vibrancy. Its bronze façade is the highlight of this new iconic landmark, celebrating the heritage of the local Chinese culture. The scheme has improved the quality of the neighbourhood's urban experience with the organization of new pedestrian pathways, new public outdoor spaces, visually interesting focal points and the hotels multi-million dollar art collection, much of which is on display in public spaces.

40 Liberty Bridge Road

Newham, Greater London

ANTHONY COLEMAN



Architect
Penoyre & Prasad
Client
Olympic Delivery Authority
Main Contractor
Willmott Dixon Construction Ltd
Project Manager
Lend Lease
Structural Engineer
WSP
Civil Engineers
WSP
Services Engineer
Wallace Whittle
Landscape Architect
Applied Landscape Design
Quantity Surveyor
Gardiner & Theobald LLP
Planning Consultant
RPS
Fire Engineering
JGA Fire Engineering
Acoustic Consultant
Hann Tucker Associates
Lighting Consultant
Elektra Lighting Design
Artist
artinsite

Occupying a tight triangular site the building provides a state-of-the-art accommodation for Newham NHS Care Commissioning Group along with an additional of premises for the East Village Community Development Trust. Both the Olympics and legacy uses called for a distinguished, truly civic architecture. The buildings' sculptural form exploits the site to boldly announce its presence. A public, street-facing arcade houses welcoming, sheltered entrances. Flexible enterprise/training space and income-generating services, such as a pharmacy and café, have been provided. The façade is set back to create a generous arcade of gold, silver and bronze community-use shop fronts – a reference to the Olympic medals. It frames a hierarchy of street fronts and the main entrance into the building, a deliberately welcoming gesture symbolising the building's commitment to its local community. The accessible, flexible, highly specified health centre meets local health needs now and into the future, a critically important resource for local people in the context of predicted healthcare and demographic trends. Through carefully considered local needs identified from stakeholder consultations it avoids duplicating amenities available elsewhere in the Borough, optimising scarce public resources for social benefit.

Blackpool Council Offices

Blackpool, North West

AHR ARCHITECTS



Architect
AHR
Clients
Muse Developments
Blackpool Council
Project Manager
URS
Main Contractor
Eric Wright Construction Ltd
Quantity Surveyor
Aecom
Structural Engineer
Arup
M&E Engineers
Hannan Associates
Fire Engineering
Arup

Situated adjacent to Blackpool North Railway Station, the new Council Offices provides a modern and sleek introduction to the town and forms part of the overall redevelopment of the Talbot Gateway area of Blackpool. It has created a civic and cultural quarter set within a large, mixed-use, pedestrian friendly development. The scheme has been very well handled in all architectural aspects and provides excellent space for its occupants. The design goes to extreme lengths to make the building accessible for its users and employees and represents a modern office building, whilst incorporating visual themes that tie back to the heritage of Blackpool without being a pastiche. Retail units fronting on to the street bring the public in to the building, with access in to the external courtyard providing seating for cafes. The building has helped to transform a neglected and under-utilised area of the town in to a modern welcoming environment which will provide civic pride and help regenerate and rejuvenate the city.

Burntwood School

Wandsworth, Greater London

TIMOTHY SOAR



Architect
Allford Hall Monaghan Morris
Client
Wandsworth Borough Council
Structural Engineer
Buro Happold
Main Contractor
Lend Lease
Specialist Sub-Contractor
Techrete Architectural
Precast Cladding Specialist
Landscape Architect
Kinneer Landscape
Environmental Designer
Studio Myerscough
M&E Engineers
Mott MacDonald
Fulcrum
Access Consultant
David Bonnett Associates

The scheme consists of a series of new educational buildings and a new landscape plan for the whole site. The original main assembly hall and pool building have been retained. The new buildings increase the school's capacity by more than 200 pupils. The complex of buildings is very much in line with the Modernist heritage of the existing buildings; the school is experienced as a campus-type development which exploits views and spaces between buildings, and enables the green spaces beyond to be appreciated from the heart of the campus. The building is simple, robust and easily to maintained with striking faceted reinforced precast concrete panels to the curriculum buildings which provides visual variation through minimum mould types — subtle on long elevations, and more playful on flank elevations. The panels are faceted to create a visually interesting and playful façade in addition to providing increased solar shading. The design provides visibility and ease of access to the school's new and existing facilities in order to support its role as a community hub and resource. The new facilities have been designed to extend the school's capacity to deliver its commitment to engage the local community, with a number of groups benefitting from the additional facilities on the school site.

Enterprise South Liverpool Academy

Liverpool, North West

DAVID BARBOUR



Applicant
BDP
Architect
BDP
Services Engineer
BDP
Structural Engineer
BDP
Landscape Architect
BDP
Acoustic Engineer
BDP
Lighting Design
BDP
Main Contractor
Lend Lease
Access Consultant
Turner & Townsend

A very simple approach of placing the user at the heart of the design process has shaped the architecture around both the functional and social ideas for the project. ESLA aims to provide the very best, user-centred and inspirational educational environments possible; places and spaces that are enjoyed and appreciated by the people who use them. The unique architectural identity and the use of colour, light and natural materials throughout the school and in particular in the 'heart space' are all exemplary. The site has been carefully laid out to ensure it is accessible and welcoming to all members of the local community. The entrance piazza creates a new quality civic space for the local community and the Academy, which encourages rest and relaxation whilst at the same time being dynamic and robust enough to facilitate social interaction, play and movement. Planting is contemporary and the views of open land are continuous, feeling as if they are part of the school grounds.

Hayes Primary School

Croydon, Greater London

KILLIAN O'SULLIVAN



Client
London Borough of Croydon
Architect
Hayhurst and Co.
Services Engineer
Crofton Design
Structural Engineer
Crofton Design
Quantity Surveyor
Davis Langdon
Main Contractor
Kier Wallis

Sitting in a semi-rural location, the design acknowledges its setting through the building's largely glazed elevation with classrooms looking out onto the new landscaped grounds, a large mirrored façade and the use of exposed timber inside and out. The exciting and vibrant new extension glimmers with the reflection of the surrounding trees, providing a renewed energy to a building at the heart of its community. Through its varied use of materials, the building actively encourages pupils to engage with the architecture of the building; climbing in, sitting on, feeling the rough and the smooth surfaces, the joints and connections and to think about the building they are in. It presents a statement that confirms the school's position at the centre of the local community but at the same time reflect its natural and semi-rural setting. The new accommodation comprises 4 new Infant classrooms, an ICT Lab, small hall, new administration facilities and new external play spaces; providing improved learning resources for the school and communal facilities for the local area.

JW3

Camden, Greater London

HUFTON + CROW



Applicant
Lifschutz Davidson Sandilands
Architect
Lifschutz Davidson Sandilands
Client
JCC Ventures Ltd
Universal Design Consultants
People Friendly Design
All Clear
Landscape Architect
Churchman Landscape Architects
Main Contractor
BAM Construction Ltd
Project Manager
AECOM
Quantity Surveyor
Gardiner & Theobald
Services Engineer
Norman Disney & Young
Structural Engineer
AKT II
Acoustic Consultant
Cole Jarman
Environmental Consultant
AECOM
Environmental Consultant
Baker Consultants
Fire Engineering
Jeremy Gardner Associates
Lighting Consultant
Speirs & Major
Planning Consultant
DP9
Artist
Catharine Yass
Theatre Consultant
Charcoal Blue
Transport Consultant
Steer Davies Gleave
Catering Consultant
Nick Lander

This state-of-the-art community and cultural centre in West Hampstead has been established for the benefit of the Jewish community, the local community and for London. Its vision is to be at the heart of a unified, diverse community, inspired by and engaged in Jewish arts, culture and life. The building responds to the sloping topography of the site, the slender tower creating a landmark for the two arts institutions. The design is composed of a number of simple architectural set-pieces – the tower and an elegant pavilion accessed by a bridge that spans a sheltered piazza. The scheme includes a café, auditorium and screening room, classrooms and exercise rooms as well as a nursery and offices for the organization itself. JW3 brings together the organisation's many and diverse activities into a single, culture-driven, building. The complex brief was established from a schedule of user-requirements and a vast programme of long and short-term events. JW3 is made of durable materials found in the immediate built context and in London's most appealing civic buildings. The design is a composition of simple rectilinear forms that provide great flexibility – a loose fit structure to respond to the tests of time, an approach which is at the core of the practice's ethos.

King's Cross Square

Camden, Greater London

HUFTON + CROW



Applicant
Stanton Williams
Architect
Stanton Williams
Client
Network Rail
Main Contractor
J Murphy & Sons
Lighting Design
Studio Fractal
Multidisciplinary Engineer
Arup
Arboricultural Consultant
BHSLA
Station Architects
John McAslan + Partners

King's Cross Square forms a focal point at the heart of a district which, following decades of neglect, is being injected with a new energy through a range of major urban and transport projects. The site has been transformed into a significant new civic space for London, complementing the area's rich history while providing a modern, open space that functions as a vital part of the major transport interchange around King's Cross and St Pancras stations. The Square also accommodates the entrance stairs, technical equipment and vent shafts for the complex London Underground structures that lie beneath it. Designed to visually link the square to the restored historic façade of the station, the Square is paved with striking bands of dark and light grey granite, recalling the railway lines that terminate behind the station's façade and accentuating the hard-edged, urban feel appropriate for the square's busy location. The use of granite is consistent throughout, providing a strong visual identity. All landscape elements such as benches and tree planters are clad in dark grey granite, visually locking into the dark paving stones. The overall design quality is enhanced by soft landscaping. Benches are integrated into the design of the planters and provide a shady area for pedestrians to sit, pause, enjoy and engage with the square.

Liverpool Everyman Theatre

Liverpool, North West

HAWORTH TOMPKINS / PHILIP VILE



Architect
Haworth Tompkins
Client
Liverpool and Merseyside Theatres Trust
Interior Designers
Haworth Tompkins citizens design bureau
Main Contractor
Gilbert-Ash
Project Manager
GVA Acuity
Quantity Surveyor
Gardiner & Theobald
Theatre Consultant
Charcoalblue
Structural Engineer
Alan Baxter & Associates
Services Engineer
Watermans Building Services
CDMC
Turner and Townsend
Acoustic Engineer
Gillieron Scott Acoustic Design
Artists
Antoni Malinowski
Jake Tilson
Dan Kenyon
Catering Consultant
Keith Winton Design
Access Consultant
Earncliffe Davies Associates

Situated in a sensitive, historic city centre site, The Everyman holds an important place in Liverpool culture and the original theatre, converted from the 19th century Hope Hall chapel, had served the city well. But by the new millennium the building was in need of complete replacement to serve a rapidly expanding production and participation programme. This technically advanced and highly adaptable new theatre includes a 400 seat adaptable auditorium, a smaller performance and development space, a large rehearsal room, public foyers, exhibition spaces, catering and bar facilities, along with supporting offices, workshops and ancillary spaces. The design retains the friendly, demotic accessibility of the old building, projects the organisation's values of cultural inclusion, community engagement and local creativity, and encapsulates the collective identity of the people of Liverpool. The entire façade is a large, collaborative work of public art consisting of 105 moveable metal sunshades, each one carrying a life-sized, water-cut portrait of a contemporary Liverpool resident. Local red brick was selected for the walls and four large ventilation stacks, giving the building a distinct silhouette and meshing it into the surrounding architecture. The project engaged every section of the city's community in a series of public events, so that the completed building can be read as a collective family snapshot of the population in all its diversity.

Living Planet Centre - WWF-UK Headquarters

Woking, South East

JANIE AIREY



Architect
Hopkins Architects
Main Contractor
Willmott Dixon
Structural Engineer
Expedition
Engineering Ltd
Services Engineer
Atelier Ten
Project Manager
King Sturge LLP
Quantity Surveyor
Gardiner & Theobald
LLP
Landscape Architect
Grant Associates
Interior Designer
Hopkins Architects
Ecologist
Aecom
CDMC
HCD Management Ltd

Located at the edge of Woking's Town Centre, the Living Planet Centre (LPC) has been suspended above an existing council car park and is WWF-UK's new ultra-green administrative building. Created to set an ambitious new precedent for similarly sized organisations, it maximises on-site sustainable features and has received a BREEAM Outstanding rating. It is designed to reflect the ethos of WWF-UK and includes an outreach component to welcome members of the public into the building. Great attention has been paid to the specification and procurement of all materials to ensure minimal environmental impact, including a significantly reduced carbon footprint compared to the industry standard. Housing 300 staff over two storeys, the building provides a flexible, collaborative and open-plan environment with conference and educational facilities and the WWF Experience exhibit. The roof is composed of a dramatic and structurally-efficient curving timber grid shell, capped with recycled aluminium featuring photovoltaic panels for energy production and large metal wind cowls to assist with the ventilation of the building. To reflect and enhance the rich surrounding ecology and biodiversity, the building is flanked by a series of green, planted spaces, existing trees have been retained and a new wetlands area created to provide a wildlife corridor from the Basingstoke Canal to Horsell Moor and enhance the public realm along the historic canal. A replacement bridge from the town centre has been constructed which leads to the public piazza at podium level to enhance connection to the local community.

Parkside

Derbyshire Dales, East Midlands

TRISTAN POYSER PHOTOGRAPHY



Client
Bancroft Homes Ltd.
Architect
Evans Vettori
Architects Ltd.
Main Contractor
Bancroft Homes Ltd.
Structural Engineer
AJS Structural
Design
Approved Building Control Inspector
MFA Building Control
Ltd.
Planning Consultant
Planning Design
Practice Ltd.
Specialist Sub-Contractor
Norman &
Underwood
Transport Consultant
Bancroft Consulting

Located in the heart of Matlock's Conservation Area, this new contemporary building follows the historic pattern of development in this area. The design is polite and well-proportioned in character, respectful of the historic context in which it resides. Robust, high quality detailing ensures a sense of suitable solidity and quality. Visual cues generate vertical storey heights and glazed openings of handsome proportions reinforce the visual character of the surrounding context. Taking advantage of its central and vibrant location, the scheme creates a contemporary and highly accessible public area, supporting the local economy through creation of employment opportunities and forms an attractive destination for tourists and locals alike. The sheltered arcade and retail units, located along an active pedestrian route, is an important feature and bring lightness, detail, variety and character to the street-scene. Natural stone paving continues through from the adjoining pavement to create a soft edge between building and street. The scheme represents high quality sustainable development, improving the appearance of this part of the town centre within the wider Conservation Area. The development admirably supports the local community further by being courageously developed at an economically difficult time setting out to employ local craftsmen and sourcing materials locally. The result not only provides much needed apartment accommodation and further business and employment opportunities, but is a building of local pride surpassing its civic responsibility.

Spotlight Youth Space

Tower Hamlets, Greater London

MORLEY VON STERNBURG



Architect

Astudio

Client

Poplar HARCA

Main Contractor

Higgins Construction

Contractor's

Architects

RPS Architecture

This creative youth space designed to inspire has been shaped by young people, for young people. It offers free, state of the art sound, film, design, art and broadcasting facilities, alongside performance, dance, boxing, fashion, styling and chill areas. During the school day part of the building is used by Langdon Park School as their sixth form, maximizing the use of the spaces and is partnered with a number of organisations such as the National Theatre, University of the Arts London, Barbican, IMD Legion and Poplar Boys & Girls Club. The design is strongly expressed consisting of two interlocked cubes which create a vibrant, colourful, creative space. One reflects the adjacent school buildings, whilst the larger 'youth' cube is clad in colourful bespoke aluminium cladding panels, developed from the Spotlight logo, which is based on the lens of a spotlight. This material changes colour with the angle that you view it and under different daylight/sunlight conditions. The effect is intensified by the texture of the embossed and indented panels, creating a striking and unique facade for Spotlight. The extended public realm and glazed ground floor with cafe facing onto the street, opens up Spotlight to the public and has created a more integrated and enlivened environment than was previously possible. This unique welcoming space is open to all and is dedicated to growing young talent.

St George's Chapel

Great Yarmouth, Eastern

RICHARD DAVIES



Architect

Hopkins Architects

Client

Great Yarmouth Borough Council

Structural

Engineers

URS

Jane Wernick

Associates

Theatre

Consultant

Charcoalblue

Quantity Surveyor

Allman Woodcock

Acoustic

Consultant

Ramboll

Historic Building

Consultant

Hutton & Rostron

Main Contractor

RG Carter

Grade I-listed St George's Chapel was constructed of brick in 1714 and forms the centrepiece to Great Yarmouth's King Street Conservation Area. In the 1970s, it was converted into a theatre and had remained empty for the five years prior to the project's start. Work was undertaken with the utmost care and sensitivity on preserving, enhancing and clarifying the Chapel's historic value and removing unsympathetic interventions wherever possible. Working to a tight budget, the Chapel has been restored and rejuvenated as an intimate space for the performing arts; it includes a simple fixed stage and flexible seating, along with toilets, changing rooms and other support spaces. The new pavilion alongside it complements the setting and function of the restored Chapel and contains breakout space for the theatre. The pavilion responds to the geometry of the Chapel, featuring gently curved ends crafted from brick; in between, glazed areas allow natural light to filter in, creating a welcoming atmosphere for both theatregoers and the public. The theatre delivers a programme of outstanding arts events that widens and deepens the culture offering of the town. The Chapel is also utilised on a daily basis by a diverse range of community groups and the rekindled amateur theatre group and new youth theatre both stage regular productions and workshops inside. Together, these buildings create a vibrant cultural centre within the quarter and restore the surrounding urban space in the centre of the town.

Stoke-on-Trent City Centre Bus Station

Stoke-on-Trent, West Midlands

JIM STEPHENSON



Architects

Grimshaw
(competition scheme)
SBS Architects
(completion & construction)

Client

City of Stoke-on-Trent

Structural Engineer

Arup

Quantity Surveyor

Gleeds Worldwide

Landscape Architect

Planit Intelligent

Environment

Civil Engineers

Arup

M&E Engineers

Arup

Transport Consultant

Arup

Building Contractor

Vinci Construction Ltd

Located at a prominent gateway on the edge of an urban block, the new station creates a significant landmark and the building's sculptural roof guides visitors into the heart of the city. The character of the canopy alters depending upon your approach. South facing you are guided by a shimmering, contemporary shield – a confident statement on the city's edge. North facing, towards the rooftops of Victorian Hanley, a timber soffit provides a welcoming and warm environment for waiting passengers. The edge rises and falls to create a wave-like form that identifies entrances and passenger facilities, and curves down and around to shelter waiting passengers from the prevailing wind. It extends significantly beyond the edge of the station to engage with the public plaza, knitting the concourse into the urban landscape. The Station is a key component of the regeneration plans to transform the city centre into a retail and leisure destination and to create a thriving, distinctive, diverse and competitive City Centre. It embraces the highest design quality and sustainability standards and serves the needs and aspirations of all its user groups.

Tate Britain, Millbank Project

Westminster, Greater London

CARUSO ST JOHN ARCHITECTS LLP



Applicant

Caruso St John Architects
LLP

Architect

Caruso St John Architects
LLP

Client

Tate

Universal Design Consultant

All Clear Designs

Main Contractor

Lend Lease

Project Manager

Deloitte

Quantity Surveyor

Turner & Townsend

Services Engineer

Max Fordham LLP

Structural Engineers

Alan Baxter Associates

Fire Engineering

Aecom

Planning Consultant

Waterman Health and

Safety

Acoustic Consultant

Sandy Brown Acoustics

Façade Engineering

Gifford

Building Physics

Cundall

A three phase project, the first two of which focused on the refurbishment of the Grade II* listed building; and was primarily concerned with improving energy efficiency, increasing legibility for visitors, providing new spaces for learning and enjoyment and improving the quality, robustness and flexibility of the existing galleries. The project has removed anachronistic modifications and substandard building fabric to restore a suite of grand simple rooms. Alongside this conservation project a completely new environmental control system was incorporated in an opportunistic way, making use of existing voids, structures and finishes to conceal, support and terminate new services. Circulation spaces have been opened up around the Rotunda at the Lower and Principal levels. The Upper level which was closed to the public in 1928 has reopened as a Members' Area and function room overlooking the river. One of the explicit aims of the project was to improve access to the building and to transform visitors' experience. The project introduces two new spiral staircases and a lift to improve circulation for all visitors and to make more legible and explicit connections between the different levels. New interpretation galleries, new learning spaces and a comprehensive new signage system have improved intellectual access.

The Lee Centre

Bath, South West

DAVID GRANDORGE



Architect

Feilden Fowles
Original Architect
 Feilden Clegg Bradley
 Studios

Client

Bath & North East
 Somerset Council

Main Contractor

H Mealing & Sons

Structural Engineer

Ramboll

M&E Engineers

Hoare Lea

Landscape Architect

Secret Garden Project Ltd

Quantity Surveyor

Currie Brown

Consultant Engineers

Rexon Day

Services Engineers

Keyplan Engineering

Integrated Design

Partnership

The two storey Centre demonstrates Science, Technology, Engineering and Maths through themed classrooms, a double height breakout space and open flexible spaces for independent learning, aimed at older students within the school as they prepared for university. Constructed in cross-laminated timber, the building is partly embedded in the landscape, accessed by ramps leading up to the first floor gallery level overlooking the hub space. The hung sweet-chestnut cladding marches across the elevations with a strong vertical rhythm, giving way to dark-stained timber at the lower level, which are also used elsewhere to express deep cuts in the building envelope for entrances. The project employs an earthy palette of materials, including polished concrete floors, rammed earth and timber designed to engage students and honestly express the structure and materials. Major planning hurdles included the site being deemed as within the green belt surrounding a world heritage site and building on a sports field in an area of outstanding natural beauty. Planning permission was won due to the innovative environmental design and by setting the building into the limestone hillside.

The Level

Brighton, South East

LUC



Landscape Architect

Land Use Consultants

Architect

Knox Bhavan Architects

Client

Brighton and Hove City
 Council

Quantity Surveyor

MacConvilles Surveying

CDMC

MacConvilles Surveying

Structural Engineer

Price and Myers

Services Engineer

Paul Bastick

Specialist Sub-Contractor

Freestyle Skateparks

Ltd

This well-used and valuable historic open green space on the main approach to Brighton is the largest green space in the Valley Gardens Conservation Area. Having suffered from several years of underinvestment, urgent action was required to ensure it could continue to meet people's needs today, whilst preserving its historical and cultural importance. The design of the new Water Fountains integrates the retained MacLaren features and re-introduces the previous footprint of the model boating pond. Two dilapidated pavilions with municipal use dating from the original Bertie MacLaren 1920s design have been sensitively restored and fitted out to provide flexible community rooms. A new café, located at the heart of the park, offers wide-ranging views over the surrounding park and fountain. The playground has been designed with the aim of minimising 'hard' landscape features, with many natural play elements incorporated, including a 'beach' area with sand and customised Brighton style beach huts. The skate park, first established at The Level in the 1970s, has been relocated to the centre of the park and by combining bowls and streetscape style features it appeals to skaters of all ages, abilities and interests. The Northern area of the park has been upgraded and re-turfed with path widths reduced to a more suitable pedestrian friendly scale. A perimeter strip of wildflower meadow provides additional colour and interest for wildlife and park users alike.

University of Exeter: The Forum

Exeter, South West

HUFTON + CROW



Applicant
Wilkinson Eyre Architects
Architect
Wilkinson Eyre Architects
Client
University of Exeter
Project Manager
Davis Langdon
Main Contractor
Sir Robert McAlpine
Services Engineer
Buro Happold
Landscape Architect
Hargreaves Associates
Planning Consultant
Turley Associates
Arboricultural Consultant
JP Associates

The orientation and arrangement of the building and its adjacent landscaped piazzas respond to the contours of the hillside setting, which are traced by a "green corridor"; the main pedestrian route through the scheme. The steep topography of the hillside has been rationalized into two circulation levels that connect the Library and the Great Hall, unifying two vital centres once separated by a steep slope. The new landscaped Entrance Piazza defines a new front door to the campus and to the Northcote theatre and provides public and students alike with high quality open space for relaxation at the natural centre of the campus. Specially commissioned public art, by the glass artist Alexander Beleshenko, joins art from the University's own collection on prominent display. The new smoothly curved entrance building provides a reception area for the University and Great Hall. Rising one storey, it traces the northern elevation of the Great Hall above a covered walkway before merging with the centrepiece of the Forum project: an undulating timber gridshell roof, to flow around the rectilinear brick buildings as an extension of the landscape. Beneath the roof and behind the glass facades that enclose the space between the existing buildings, the Forum is an airy, galleried hall which shelters and unifies a series of new student-focused spaces. The upper level gives access to the Great Hall, Student Guild and a new suite of learning labs and seminar spaces designed for Harvard-style exploration sessions.

Virginia Water Pavilion

Runnymede, South East

STANTON WILLIAMS / THE CROWN ESTATE



Applicant
The Crown Estate
Concept Architect
Stanton Williams
Client
The Crown Estate
Landscape Architect
Russ Canning and Company Limited
Main Contractor
Ashe Construction Limited
Owner
The Crown Estate
Project Manager
Russ Canning and Company Limited
Quantity Surveyor
HDC
Services Engineer
Max Fordham
Structural Engineer
Webb Yates
Contractors Structural Engineer
Stuart McCurry and Partners
Contractors Services Engineer
Solutions Engineers
CDMC
AGA
Construction Management
Ashe Construction Limited
Contractor's Architects
Archial
Masterplanner
Russ Canning and Company Limited
Commercial Manager
The Crown Estate

This visitor centre, overlooking Virginia Water Lake, has been designed to form a southern gateway into the Grade 1 Listed Landscape of Windsor Great Park. The building design was selected as competition winner for its simplicity, elegance and clean lines. Constructed predominantly of Windsor Estate timber and embodying many sustainable features, the building reflects the Crown Estate's core values of commercialism, integrity and stewardship. The extensive use of English oak, both inside and outside of the spectacular building was a requirement of the design competition brief, reflecting the importance of oak within the Great Park as veteran trees, woodland and parkland trees. An extensive consultation exercise was undertaken as part of the planning and design process. This included advance signboards, a dedicated website and online facilities for feedback and comment. The new building provides an office base for the Great Park Visitor Services Team and offers a meeting place, refreshments and toilet facilities to those visiting this south-eastern corner of Windsor Great Park.

Whitehorse Manor School/ Pegasus Academy


Croydon, Greater London

KILIAN O'SULLIVAN



Architect
Hayhurst and Co.
Clients
London Borough of
Croydon
Pegasus Academy Trust
Main Contractors
Kier Wallis
(Phase 1)
Morgan Sindall
(Phase 2)
Structural Engineer
Ian Wright Associates
Quantity Surveyor
SENSE
Services Engineer
Edward Pearce

Part of the Pegasus Academy Trust, the schools were identified to receive Primary Capital Programme funding to increase its number on roll from 420 to 630. Complete in 2014, the expansion comprises of a new nursery, 6 new classrooms, an enlarged hall and new entrance and administration areas linking the two previously-separate schools. The project brings together a fragmented site with a series of interventions and extensions that thread new teaching spaces together through a complex arrangement of existing buildings. Conceived as a series of room-scaled extensions, the design assimilates the pitches and proportions of the Victorian school but plays with the scale, repetition and constructional authenticity of the forms. The language of the Victorian school is adapted to shape the character of the spaces created. Both inside and out, the roof-scape is intended to animate and excite a playful and stimulating learning environment. The school extension has created more and larger spaces for community use and the school is now home to three churches and a packed schedule of evening, weekend and non-term time activities. The choice of materials on the front façade reflects the key role that the building plays in its community with pride. The design of the scheme was the result of a consultation heavy process and the resulting building is widely appreciated and admired.




MARTIN ASHLEY
ARCHITECTS
DESIGN AND CONSERVATION
CONSULTANTS



The Canons' Cloister, St George's Chapel, Windsor
Photograph by kind permission of the Dean and Canons of Windsor

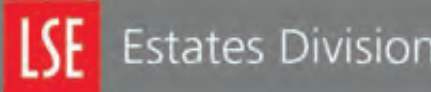
Martin Ashley Architects are specialists in the field of conservation and regeneration of outstanding historic buildings and provide expertise in contemporary design for new buildings in historic contexts.

46-48 London Road, Twickenham, Middlessex, TW1 3RJ
Tel. 020 8948 7788 email: enquiries@ma-arch.co.uk www.ma-arch.co.uk



SAW 5WEE HOCK STUDENT CENTRE, 2014

As we create a world-class estate, our aim is to inspire and enthuse; therefore the London School of Economics and Political Science is proud to support the Civic Trust Awards



LSE Estates Division

CULLOMPTON The Walronds

Devon, South West

MARCUS CHANTREY / B2 ARCHITECTS



Conservation Architect
benjamin+beauchamp architects
Client
Cullompton Walronds Preservation Trust
Main Contractor
Splitlath Conservation
Quantity Surveyor
Greenwoods Projects
Structural Engineer
Mann Williams
Services Engineer
Martin Thomas Associates
Archaeologist
Keystone Historic Building Consultants

The Walronds is an unusually complete high status 1605 Grade I listed town house on an ancient burghage plot in the centre of Cullompton in Devon and by 1996 the building was suffering from structural problems. Major beams had decayed, walls and chimneys were collapsing through water ingress, cob was failing as a result of cementitious renders and the slate roof was in urgent need of renewal. The poor condition of the building was a blight on the face of central Cullompton and was placed on the English Heritage 'at risk' register in 2005. In May 2008, with the advice and financial support of the AHF, The CWPT commissioned an Options Appraisal which recommended the continued use of the ground floor and outer garden by the CWPT for the benefit of the community and use of the upper floors and inner garden as a holiday let. This report was accepted and was used to make applications for development grants from the Heritage Lottery Fund, English Heritage and others. Work was completed in early summer 2014. The completed project includes 3 large community rooms available for public use all of which are supported by a commercial kitchen with other ancillary accommodation. On the upper floors the holiday let sleeps nine. This project demonstrates excellent use of research, analysis of materials, commissioning of specialist reports and opening-up works to aid specification and enable a thorough understanding of the building and its elements. There is an excellent repair strategy and its practical application, with sensitive up-grading for future use.

Hadlow Tower

Kent, South East

RICHARD LEENEY



Client
The Vivat Trust
Community Group
Save Hadlow Tower Action Group
Architect
Thomas Ford & Partners
Project Manager
Greenwood Projects Ltd
Quantity Surveyor
Greenwood Projects Ltd
CDMC
Greenwood Projects Ltd
Structural Engineer
The Morton Partnership Ltd
Services Engineer
Martin Thomas Associates
Main Contractor
Mansell Construction Services Ltd
Specialist Sub-Contractor
Paye Stonework & Restoration Ltd
Original Architect
George Ledwell-Taylor

This Grade 1 listed Georgian folly built for Walter May from 1785 in a richly ornamented Gothic style constructed in brick with a Roman cement render finish and cast details, formed part of Hadlow Castle and was demolished in 1951. The 52m high octagonal tower was added in 1838 and extended a further 12m with a lantern in 1840. The Great Storm of 1987 caused extensive detachment of the elaborately modelled Roman cement finish and decorative details, already weakened by years of neglect. In 1996 the lantern was dismantled. Pressure from the local community through Save Hadlow Tower Action Group (SHTAG) was pivotal in the successful campaign to repair the tower and make it accessible to the public. The campaign culminated in 2011 with the compulsory purchase of the tower by Tonbridge and Malling District Council, who sold it to the Vivat Trust, an organization dedicated to rescuing historic structures and securing their future by repairing them and letting them out as holiday accommodation. The works included reinstatement of the lantern and lost Roman cement detail, strengthening the structure with a steel frame, a new lift and stair access and the provision of holiday accommodation. The scheme shows true dedication and achievement of all involved to rescue a structure that would otherwise be abandoned to ruination. Extensive background research has been carried out, both into the significance of the tower itself, and also its construction, including material analysis and trials. There is an excellent conservation and restoration strategy, with contemporary adaptations to safeguard the tower's future.

King's Cross Station

Camden, Greater London

HUFTON + CROW



Architect
John McAslan
+ Partners
Client
Network Rail
Main Contractor
Laing O'Rourke
Costain JV
Structural Engineers
Tata Steel
Projects
Arup
Main Contractor
Vinci
Construction
UK
Main Contractor
Kier Rail

The Grade 1 listed King's Cross project is an exemplary, multi-modal transport hub, connecting to St Pancras, London Underground, Thameslink, buses and taxis and involved consultations with more than 20 stakeholders, and co-ordination between multi-contractor teams over a period of 15 years. A major challenge was to introduce modern services into a Grade 1-listed railway station. This has been achieved with careful research; complete understanding of the site and its environs, extensive consultation with statutory authorities and thorough assessment of options. The transformation involves three very different styles of architecture: re-use, restoration and new build. This complex project comprised the repair of the main train shed, Eastern and Western Ranges; new servicing within the sub-platform vaults; a new platform under the Eastern Range; upgrade of all other platforms; a new bridge with vertical circulation; a new, highly expressive Western Concourse, designed as a centrepiece and the 'beating heart' of the project; a new gate-line at the southern end of the Western Range, linking the concourse and the train shed; and the restoration of the station's previously obscured Grade 1 listed façade main façade, the original Booking Hall and Parcels Office atrium. This extensive project excellently illustrates a wide range of repair, conservation, restoration and new intervention to rejuvenate and up-grade the original structures and spaces, enabling the station buildings and its termini to continue in its use as originally intended. It is an excellent demonstration of the conservation of historic fabric complemented with new contemporary design and innovation.

Middleport Pottery

Stoke-on-Trent, West Midlands

TIM CROCKER



Owner
The Prince's
Regeneration Trust
Project Manager
The Prince's
Regeneration Trust
Architect
Feilden Clegg Bradley
Studios
Services Engineer
E3 Consulting Engineers
Structural Engineer
Integral Engineering
Design
Civil Engineers
Integral Engineering
Design
Heritage Interpretation
Marion Blockley
Conservator
Halahan Associates
Cost/Risk
Gleeds

The site houses the last working Victorian pottery in the UK, which produces world renowned Burleigh pottery and is a unique visitor experience with ceramics made over the years and moulds from the site's unique collection on display. Visitors can step inside the industrial bottle kiln where pottery was once fired and can see the clay being formed, fired and decorated using hand-decoration techniques. An extended Burleigh shop sells pottery made on-site, and there is a new café and gallery as well as a workshop and office spaces. A package of facilitating / urgent works was carried out to deal with immediate issues of site safety, water ingress, site surveys and asbestos removal, to help de-risk the complex main contract. The Grade II* listed buildings have been repaired and restored, to secure their unique character. The scheme is an excellent illustration of research and analysis of both structure and contents, including opening-up works to aid the preparation of specifications. The light-touch approach that is clearly key to the success of the project has been well managed through the construction phase, with sensitive repairs being favoured over replacement and restoration. This is an excellent demonstration of true conservation principles at work, preserving building, artefacts and the building use for the future.

Oxford University Museum of Natural History

Oxford, South East

OXFORD UNIVERSITY MUSEUM OF NATURAL HISTORY



Client
University of Oxford
Estates Directorate
Architect
Purcell
Main Contractor
Beard Construction
Project Manager
Turner & Townsend
Quantity Surveyor
Turner & Townsend
Conservation Architect
Eura Conservation Ltd
Lighting Design
Oxford University
Estates Services
Lighting Consultant
Monard Electrical LLP
Light Manufacturer
Zumtobel

The Grade I listed building is characterised by 3 glass and cast iron roofs, 4 storeys high, which span the main exhibition quad. As a result of its design, the roof leaked ever since it was completed 150 years ago. The project has minimised the roof’s water ingress without affecting the building’s ability to breathe, ensuring that condensation could escape and prevent masonry bees from entering. Other works involved cleaning painted metal work/timber and laser cleaning the upper colonnade. Waterproofing was installed under the slate margins and lead work was replaced. Works were carefully planned so that the Pitt Rivers Museum (accessed through the Natural History Museum) remained open to the public. While the central quad was closed, the conservation team worked on the exhibits. The scheme is an excellent demonstration of investigation, analysis and trials to find an appropriate solution to the fundamental flaw in the original glass roof covering. It illustrates not only the careful conservation and repair of building fabric, but also conservation of the original architectural intent. An excellent, practical conservation strategy has been carried out with innovative solutions.

Wentworth Castle Glasshouses

Barnsley, Yorkshire & Humberside

EXPOSURE MARKETING



Applicant
Buttress Architects
Client
Wentworth Castle and
Stainborough Park
Heritage Trust
Conservation Architect
Buttress Architects
Main Contractor
William Anelay
Landscape Architect
URS
Structural Engineer
Thomasons

The project has conserved, where possible, and restored the glasshouses; designing a new extension to act as visitor gateway to the grade I listed parkland. The glasshouses were badly corroded, missing the majority of the original glazing and overgrown by Rhododendron. Initial review from the structural engineers identified how much of the structure could be restored and what needed to be replaced. After the remaining glazing was removed, the entire structure was labelled, dismantled and taken off site to a controlled environment. Components of the frame were refurbished, repaired and replaced, with casts taken of the original to create new moulds. Where possible, higher performing contemporary elements for the glasshouse, combating the issues that caused significant damage whilst retaining the integrity of the structure. The scheme is an excellent demonstration of careful analysis and recording of the derelict structure to aid the specification and repair strategy. Research into specific materials and details has been carried out followed by subsequent technical improvements within the construction aiming to safeguard the glasshouse for the long-term future. This is an excellent conservation and restoration scheme with sound technical resolutions.



Maggie's Merseyside at Clatterbridge

Wirral, North West

CARMODY GROARKE



Client

The Maggie
Keswick Jencks
Cancer Caring
Centres Trust

Architect

Carmody Groarke

Main Contractor

Mellwood
Construction Ltd

Charitable

Suppliers

Travis Perkins

This temporary cancer care centre in the grounds of Clatterbridge Hospital, commissioned and operated by Maggie's Cancer Care Trust, offers a very different type of psychological, nutritional and therapeutic care to its patients and their families. This building is the first temporary centre initiative by Maggie's to provide much needed support for the community and the region, in advance of the completion of a permanent facility at the Royal Liverpool Hospital in around five years' time. A place of support for patients and their families has been created, which will allow Maggie's to test how a facility could best serve the needs of the patients and the region. The temporary nature of the project and the very particular patterns of care that Maggie's provide has been central to the development of the brief with the client, as well as the overall identity of the building. The project's intended lifespan is only seven years and the client budget was considerably less than a permanent centre. In order to achieve the very tight budget, build very quickly and create a unique identity to the building, six redundant site cabins have been dramatically transformed into one single building. Alongside this is a pavilion that was used for an exhibition display during the London 2012 Olympics. With magnificent 10m long window, it forms the centrepiece of the project; the wonderful views of the Wirral landscape. These temporary structures were arranged around existing trees on the site and gave the building its form and identity.



**The next application round
will open on 3rd August 2015**
*With a launch event and exhibition
of this year's winners on 31st July 2015*

**Open to entries for domestic and
international projects from
both UK and overseas architects**

**Corporate and Local Authority
Membership Available**
*Benefits include 40% discount
on application fees,
discounted brochure adverts
and a free ticket to the
2016 Civic Trust Awards Ceremony*

Volunteer Assessors Needed
*Architects, Universal Design
professionals, Local Authority
and Community representatives*

Sponsorship Opportunities Available
*For our Special Awards
and
2016 Awards Ceremony*

Please email
info@civictrustawards.org.uk
or call (01925) 270647 for more details

www.civictrustawards.org.uk
@CTAwards
@UnivDesignAward



Amec Foster Wheeler provided landscape architectural services from inception through to completion on site for Bow School, alongside ecology, contaminated land and engineering advice.

Connected
excellence in
all we do



Amec Foster Wheeler is proud of its role in creating the state-of-the-art new Bow School in East London, winner of a Civic Trust Award 2015.

If you'd like to discuss how we can help you shape your next award-winning project, call us on 0800 371733 or email info.ukenvironment@amecfw.com.

- twitter.com/amec_fw
- linkedin.com/company/amecfw
- youtube.com/user/amecfw
- facebook.com/amecfw

amecfw.com



BDP.com

||| *Students, staff and parents
think it's fantastic and are
bringing friends and the local
community in for tours.*

Jack Pendlebury, Principal

ENTERPRISE SOUTH LIVERPOOL ACADEMY
SHORTLISTED FOR A 2015 CIVIC TRUST AWARD
Photography © David Barbour



Projects that make a significant contribution to the quality and appearance of the built environment. Commendation level schemes demonstrate a good standard of architecture or design, sustainability, universal design and provide a positive social, cultural, environmental or economic benefit to the local community.

Dallas Brooks Community School

Victoria, Australia

MCBRIDE CHARLES RYAN



Architect
McBride Charles Ryan
Client
Department of Education & Early Childhood Development
Landscape Architect
Outlines Landscape Architecture
Quantity Surveyors
Davis Langdon AECOM
Services Engineer
ALA Consulting Engineers
Structural Engineer
Van de Meer Consulting
Civil Engineers
Van de Meer Consulting

The school is an amalgamation of three local primary schools in Dallas, Broadmeadows, in the North of Melbourne. It is part of a number of public school developments in the area collectively referred to as the Broadmeadows Regeneration Project, a Victorian government initiative aimed at producing positive social change in a community where the lack of community services, poverty, crime, and social marginalisation represent genuine challenges. The school acts as a walled city, linking small communal teaching spaces with open courtyards. The plan is arranged to produce several shared spaces, sheltered by the surrounding classrooms and community facilities. Teaching spaces are planned so that students move cyclically through the school, with their physical progression around the campus diagramming their educational progression from the Early Learning Centre, through to the final years of primary school. Each learning community represents a different pedagogical model, expressed through different planning principles, driven by an overarching aim to improve literacy, numeracy and creativity in the students. In this way, the planning endeavours to construct an atmosphere that facilitates a fluid and rich journey through the early years of early academic life.

Pulkovo International Airport

St Petersburg, Russia

GRIMSHAW



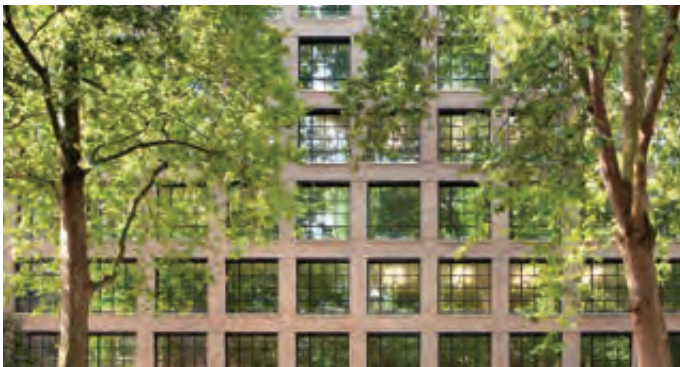
Architects
Grimshaw Architects
Pascall+Watson
Client
Northern Capital Gateway
Structural Engineer
Arup
Services Engineer
Buro Happold
Quantity Surveyor
Turner & Townsend
Airport Specialists
NACO
Retail Specialists
Chapman Taylor
Structural Engineer
Ramboll
Services Engineer
Ramboll
Main Contractor
IC Ictas Insaat

Pulkovo Airport is part of the Northern Capital Gateway development programme, which includes a hotel, business centre, office developments and extensive refurbishment of the surrounding infrastructure. Situated in St Petersburg's northern location, its architectural character is represented by the uniqueness of the city – its setting by the river Neva, its rich cultural heritage and its Arctic climate. The building is designed to protect passengers from the climate while introducing them to the city. Internally, the faceted forms of the soffit are designed to be evocative of the pitched roofs of the city, with surface textures reminiscent of the crystal patterns of ice and snowflakes. East and west facing facades are designed to respond to specific functional and climatic demands. North and south facades are largely glazed, presenting the airport to arriving and departing passengers, whilst echoing those found on St Petersburg's most significant buildings.

1 Page Street, London SW1

Westminster, Greater London

PHILIP VILE



Architect
PLP Architecture
Client
Derwent London
Main Contractor
BAM Construction
Owner
Derwent London
Project Manager
Blackburn & Co. LLP
Quantity Surveyor
AECOM
Services Engineer
Hurley Palmer Flatt
Structural Engineer
AKT II
CDMC
Jackson Coles LLP

The refurbishment of 1 Page Street reintegrates a ten-storey office building into its historic setting in Westminster and transforms an unloved structure into an inspiring contemporary work environment and a significant addition to Burberry's global headquarters. The structure has been re-clad and the shell and core reconfigured to create a larger and a more functional building that would appeal to high-profile occupiers and the local community. The refurbishment includes the remodelling and extension of the building and the partial rebuilding of the two upper levels to create additional workspace and a sensitive and contextual roofscape. A new landscaped courtyard garden on the court or south side provides new outdoor space and, together with the new triple-height space in the entrance hall, introduces daylight and private views to activate the new spaces on the lower ground level which may host further workplaces, multi-media conference / viewing facilities, exhibition space or meeting rooms.

1 - 6 Copper Lane

Hackney, Greater London

HENLEY HALEBROWN RORRISON



Architect
Henley Halebrown
Rorrison
Client
Springdale Gardens Ltd
Main Contractor
Sandwood Construction
Services Engineer
AJ Energy
Quantity Surveyor
MPA Ltd
Planning Consultant
CMA Planning
Services Engineer
Rodrigues Associates

London's first co-housing scheme consists of six homes. The architecture supports an "intentional" community with a common goal to live sustainably and to share certain activities and facilities such as the laundry, workshop and communal hall, whilst each having their own self contained home. The project is the first completed example in London and heralds radical changes in urban housing. It shows how architecture can respond to a new social need that has arisen through changes in both lifestyle and economics, making home ownership more affordable, as well as shaping more convivial and sustainable neighbourhoods. The design strategy maximises external space and develops a building type that manifests the idea of communality. The resulting cluster model places an upper ground floor court at the heart of the site, with the communal facilities located below, around which six houses are laid out. The hall was designed for the residents and neighbours in the surrounding streets to use for recreation, exercise classes and events.

50 George Square and the David Hume Tower Lower Ground Floor Teaching Hub

Edinburgh, Scotland

ANDREW LEE PHOTOGRAPHER



Architect
Page \ Park Architects
Client
The University of Edinburgh
Structural Engineer
Harley Haddow
Services Engineer
Harley Haddow
Quantity Surveyor
Thomson Bethune
Original Architect
Robert Matthew, Johnston-Marshall and Partners
CDMC
Summers Inman
BREEAM
AECOM
Acoustic Consultant
New Acoustics
Lighting Consultant
Fotoma
Main Contractor
Balfour Beatty

The scheme creates a new home for Edinburgh’s global centre of excellence for the study of Literatures, Languages and Cultures and has set the highest design standards for a flexible, stimulating, supportive and sustainable learning and research environment for students and staff. The historic building reflects the needs of the rich diversity of subjects, approaches and people that make up the School community, acting as a focus and a showcase for their learning, teaching and research, and creates the specific postgraduate environments needed to enable them to continue to attract the best students internationally.

Alfriston School

Wycombe, South East

JACK HOBHOUSE



Client
Alfriston School
Applicant
Duggan Morris Architects
Architect
Duggan Morris Architects
Main Contractor
Feltham Construction
Quantity Surveyor
Appleyard and Trew
Structural Engineer
Elliott Wood Partnership
Services Engineer
Skelly and Couch
Approved Building Control Inspector
Butler & Young
Specialist Sub-Contractors
Cowley Timberwork (timber prefabricated structure)
Swimming Pool Consultant
Buckingham Swimming Pools

The scheme consolidates the existing and new school sports facilities into a fully integrated sports department, defined by one singular block containing gym, changing facilities, fitness suite, admin offices and swimming pool. The new pool building sits discreetly at the rear of the site, facing directly onto greenbelt land. Intended to be a contemporary expression of the local pitched roof vernacular, but executed with subtlety, the design of the new pool enclosure envisages a raised timber structure, articulated by three repeated folded roof segments. The roof creates a dramatic internal landscape and with a narrow glass strip, circumnavigates the pool roof from the rest of the building, reinforcing the apparent floating form.

ARK All Saints Academy and Highshore School

Southwark, Greater London

TIMOTHY SOAR



Architect

Allford Hall Monaghan Morris

Main Contractor

Balfour Beatty Construction Ltd

Quantity Surveyor

Balfour Beatty Construction Ltd

Structural Engineer

James Lupton Consultants

Services Engineer

Ramboll UK

Landscape Architect

Fabrik

Acoustic Engineer

Sound Research Laboratories

Planning Consultant

Barton Willmore

CDMC

Aversion Risk Management

Fire Engineering

Fusion Fire

Approved Building Control Inspector

HCD Group

FF&E Consultants

ESA McKintosh

Environmental Graphics

Studio Myerscough

The scheme consists of a series of high quality, flexible school buildings, sports hall and church. The development was designed to reinforce the street edge using the buildings rather than fences, wherever possible, in order to provide a clear urban realm, which also allows the buildings to engage with and benefit the community which they serve. The introduction of expansive glazed areas at main spaces and entrances gives the buildings an open, welcoming feel to users and passers-by, whilst also providing passive surveillance to improve the natural security of the area. The new schools are an asset for the surrounding community and form a new physical environment for it to engage and grow with. An added asset is the Sports Hall, which provides an out of school hours community facility. The new Church of St Michael's and All Angels provides a facility which forms an important social hub for the community.

Art Park, Centre for Arts and Heritage

Glasgow, Scotland

ZM ARCHITECTURE / MCATEER PHOTOGRAPHY



Architect

ZM Architecture Ltd

Client

House for an Art Lover

Main Contractor

PAN Joiners and Building Services

Services Engineer

Harley Haddow Consulting Engineers

Structural Engineer

David Narro Associates

Since its inception in 1996, the House for an Art Lover has established a reputation as a visitor centre, successfully drawing visitors from across the world to view the interpretation of the design of Charles Rennie Mackintosh of 1901. The Centre regenerates a former Land and Environmental Services Working Compound, bringing part of the park that was private back into the public domain for their enjoyment. The Centre has been imagined as a campus, bringing together as a cohesive whole, the vacated buildings, structures and external spaces and regenerating them with new uses complemented by new buildings and landscaping. The Centre accommodates a multitude of different uses from Artist in Residence accommodation, production facilities for visual arts, spaces for the display of Art, public teaching studios, garden spaces for horticultural developments and interpretation and Heritage spaces.

Aveling Centre, Lloyd Park

Waltham Forest, Greater London

TIMOTHY SOAR



Architect

ArchitecturePLB

Client

London Borough of Waltham Forest

Landscape Architect

Plincke

Quantity Surveyor

Jackson Coles

Main Contractor

Jerram Falkus

M&E Engineers

Ramboll

Structural Engineer

Ramboll

Civil Engineers

Ramboll

Project Manager

Plincke

The Aveling Centre in Lloyd Park has been designed to cater for over one million visitors per year to the park providing new, improved facilities including a café, learning space, park ranger office, and refurbished artists' studios, as well as public toilets. The project is a low energy, new building nestling in the park supporting and enabling a wide range of community activities. It creates an outdoor space enclosed by a garden wall on one side, with large expanses of glazing to the other, opening onto the landscape. The roof, covered in wild meadow plants protects the spaces below with a large overhang. The park is a focal part of the cultural life of the area and has provided residents respite and recreation for over 100 years. The Aveling Centre is a simple but beautiful building that has turned the obvious constraints of small park buildings into an opportunity for creative thinking that delights.

Aylesbury Estate, South West Corner

Southwark, Greater London

TIM CROCKER



Clients

L&Q Group
London Borough of Southwark

Architect

Levitt Bernstein

Landscape Architect

Levitt Bernstein

Main Contractor

Durkan Ltd.

Main Contractor

Galliford Try

Project Manager

PH Warr

Structural Engineer

Alan Conisbee & Associates

Services Engineer

Mott MacDonald

The scheme represents the first new housing to be built on the estate and aims to act as an exemplar for future development. From the outset the scheme has been designed in collaboration with the existing residents to agree design principles and standards, which are intended to be used in the wider regeneration of the estate as part of the Aylesbury Area Action Plan. This has ensured that the scheme is genuinely 'tenure blind' with large groupings of a single tenure avoided by not giving preference to the location of outright sale units within the scheme over other tenures. New homes have been designed to larger space standards than usual, reflecting the desire of residents to match or better the area standards of the existing estate dwellings.

Bow School

Tower Hamlets,
Greater London

JAMES BRITAIN



Architect

van Heyningen and
Haward Architects

Clients

Bow School
London Borough of Tower
Hamlets

Main Contractor

Bouygues UK

Structural Engineer

Terrell

Landscape Architect

Amec

CDMC

Cyril Sweett

BREEAM

Encon Associates

Acoustic Consultant

URS

Specialist Lighting

Lanelyn Theatre Supplies

Artist

Bow Arts Trust

Planning Consultant

NLP Planning

Fire Engineering

URS

The new buildings are designed to offer exemplary teaching and learning spaces for its pupils. The School mitigates the challenges of its context and contributes to the regeneration of its immediate locality, improving the public realm, offering community facilities and ensuring that its design allows for future projects which will continue to improve the environment in this area of the River Lea valley. The nine-form-entry School now has a sixth form and dedicated SEN suite and includes good specialist sports and artistic facilities.

Brentford High Street 'Making the Connection'

Hounslow, Greater London

KINNEAR LANDSCAPE ARCHITECTS



Applicant

Kinnear Landscape
Architects

Landscape Architect

Kinnear Landscape
Architects

Client

London Borough of
Hounslow
GLA (Greater London
Authority)

Artists

Simon Periton
The Decorators
Lubna Chowdhary

Civil Engineers

Expedition

Owners

London Borough of
Hounslow
ISIS Waterside
Regeneration
Trehaven

Main Contractor

Maylim

Quantity Surveyor

Appleyard and Trew

Lighting Consultant

Studio Dekka

Public Art

Consultant

MAAP

The scheme seeks to remake Brentford High Street as a successful liveable town centre and reassert its sense of place and identity. The project threads to 'make the connection' include the public realm works to the Market Place and Brentford High Street. Brentford Works, Brentford Bikes, The Floating High Street and The Sheds. The project's community aspirations aim to improve local users experiences and bring joy to the public realm by combining art and materials to create a multi-function place. This truly collaborative project is part of a longer term plan to transform the external environment and locality of Brentford.



CEMAST

Fareham, South East

JAMES BRITAIN



Applicant
Perkins Ogden Architects
Client
Fareham College
Architect
Perkins Ogden Architects
Landscape Architect
Annie Lennox Landscape Architecture
Main Contractor
Leadbitter (Bouygues UK)
Project Manager
Jacobs UK
Quantity Surveyor
Jacobs UK
Services Engineer
RHB Partnership
Structural Engineer
Scott White & Hookins
Technical Advisor
Hampshire County Council Property Services

As the first major development on the newly designated Solent Enterprise Zone at Daedalus Airfield, CEMAST helps to regenerate local and regional economies. The linear building stands as a gateway and as a prominent and confident symbol of the wider Enterprise Zone. As a Centre of Excellence, the building offers a broad range of engineering training facilities as well as conference and other facilities to the Zone's business community and beyond.

'Four Houses' Old Farm Mews

Vale of Glamorgan, Wales

GARETH I DAVIES



Applicant
Hoole & Walmsley Architects
Architect
Hoole & Walmsley Architects
Client
Poil Developments (West) Ltd
Landscape Architect
Camlins
Sub Structure
Structural Engineers
Mann Williams
Main Contractor
Brickflair

The project creates a sense of place by drawing on a vernacular tradition of the front door on the street, encouraging social interaction and security. The scheme draws on the traditional rhythm of the village whilst providing a new sustainable approach to plan, form and density. First-floor external terraces over the parking courts replace the 'traditional garden', increasing density and assisting passive design of living areas. The internal layouts offer flexibility in the way rooms can be used. Terraces and windows are carefully positioned to provide good views and sunlight without infringing on privacy with neighbours. The overall site layout has introduced a new cohesion into the village centre.

Galilee Chapel

Vale of Glamorgan, Wales

MICHAEL DAVIES



Client
Parochial Church Council
of St Illtud's Church

Architect
Davies Sutton Architects

Quantity Surveyor
Parry and Dawkin

Structural Engineer
Mann Williams

Archaeologist
Cardiff Archaeological
Consultants

**Heritage Interpretation
& Exhibition Design**
Gareth Kiddie Associates

Beautifully set within the curtilage of the Grade I listed St Illtud's church, this restoration project provides a more fitting home to an important collection of early Christian Celtic stones, newly located within the ruins of the 13C Galilee Chapel. The building works have integrated a new steel frame structure to support a new roof and first floor mezzanine. The design concept was to treat all new elements as distinct and modern in order to make the historic parts clear and legible. The Chapel is supported by a dedicated team of local volunteers and guides sharing their knowledge and enthusiasm.

Hauser & Wirth Somerset

Somerset, South West

HAUSER & WIRTH SOMERSET



Applicant
Hauser & Wirth Somerset

Architect
Laplace & Co

Conservation Architect
B2

Interior Designer
Laplace & Co

Landscape Architects
Piet Oudolf
Petherick, Urquhart &
Hunt

Main Contractor
Emery Bros Ltd

Quantity Surveyor
Jackson Coles

Structural Engineer
Andrew Waring Associates

Planning Consultant
CgMs

**Environmental
Consultant**
Michael Woods Associates

Transport Consultant
Redwood Partnership

M&E Engineers
Peter Deer Associates

Situated on the edge of the town of Bruton, Durslade Farm was initially built as a 'model farm', sitting within 100-acres of fields and woodland. Unique architectural details adorned the buildings, some of which date from c. 1760. However, for many years, the farm buildings were left vacant and had fallen into disrepair. Working closely with English Heritage, Hauser & Wirth partnered with architectural firm Laplace & Co to envision the restoration project, both to conserve the outbuildings and sensitively add new gallery buildings to the site. At the heart of the project was the desire to restore and conserve these buildings for future generations.



Highfield Humanities College

Blackpool, North West

WILL PRYCE



Applicant
Feilden Clegg Bradley Studios
Clients
Blackpool Local Education Partnership
Highfield Humanities College
Main Contractor
Eric Wright Construction Ltd
Structural Engineer
Booth King
Landscape Architect
Plincke Landscape
Fire Engineering
Buro Happold FEDRA
Services Engineer
RPS Group
Acoustic Consultant
RPS Group

The project replaces all existing school accommodation with flexible, bright and open spaces. It is a school that offers real innovation and enables teaching and learning to be transformed; needing to be versatile enough to adapt to the changing needs of education, and appealing enough to engender pride among the local community. The architectural design is bold and contemporary, glazed tiles are used to create a strong, fluid and colourful identity to the building but one that is restrained and classic in its simple detail and proportion. Drawing on references from both sea-side and domestic architecture the resultant design has established immediate contextualization, both familiar and welcomed by the community it serves.

Isaac Newton Academy

Redbridge, Greater London

TIMOTHY SOAR



Applicant
Feilden Clegg Bradley Studios
Owner
London Borough of Redbridge
Architect
Feilden Clegg Bradley Studios
Client
Children's Services, London Borough of Redbridge
Main Contractor
Skanska Technology
Quantity Surveyor
Skanska Technology
Structural Engineer
Skanska Technology
Services Engineer
Hulley and Kirkwood
Landscape Architect
Grant Associates
Universal Design Consultant
Gardiner & Theobald

This new school serving Redbridge's richly diverse community pushes the boundaries for environmental school design and expresses the ARK's educational philosophy with an institution of strong civic character. Despite its difficult location, the new building is very visible from the road, and has a strong community presence. The unique form of the building is instantly recognisable by its architectural language, conveying the work of the eponymous Isaac Newton. Newtonian themes of gravity and optics are also expressed through the Academy's features and façade.

Kettering Science Academy

Northampton, East Midlands

ALAN WILLIAMS



Architect

Nicholas Hare Architects

Applicant

Nicholas Hare Architects

Clients

Northamptonshire

Country Council

Brooke Weston

Partnership

Structural Engineer

Cox Turner Morse

M&E Engineers

WSP Group

NG Bailey (post-contract)

Main Contractor

Willmott Dixon

The design strongly reflects the vision and educational philosophy of its sponsor, the Brooke Weston Academy Trust, resulting in a building that promotes positive behaviour and encourages social interaction. The new building and its facilities were designed not only to re-establish the value of learning within the community but also to act as a resource for the local community and contribute to the economic growth and prosperity of the area. It is enjoyable to use due to the clarity and fluidity of the circulation. The transparency and play of natural light creates a dynamic, open and stimulating place.

King's Cross ArtHouse

Camden, Greater London

JOHN STURROCK



Architect

dRMM Architects

Executive Architect

Weedon Architects

Client

Argent (Property

Development)

Services LLP

Main Contractor

Kier Construction

Structural Engineer

ARUP

Services Engineers

AECOM

Hoare Lea

Cost Consultant

Davis Langdon

Interior Designer

Johnson Naylor

The approach was to create a series of mini towers, which breaks the building into four smaller communities and fosters a sense of neighbourliness. The mini towers and courtyards form a saw tooth arrangement along the edge of the Handyside Park, increasing its width and enhancing the public realm. Extending the west elevation also allows many more apartments to benefit from the park side aspect, the south west orientation and views of the city. ArtHouse is home to 143 apartments which sit on a glazed plinth of commercial units that provide transparency and activity at street level. A glazed cloister runs up the side of the park linking the three cores and provides residents with a series of places to relax and meet.



Port Glasgow Community Campus

Inverclyde, Scotland

ARCHIAL NORR



Applicant
Archial Norr
Client
Inverclyde Council
Structural Engineer
Waterman Structures Ltd
Services Engineer
Buro Happold Ltd
Landscape Architect
TGP Landscape Architects Ltd
Main Contractor
Graham Construction

This rich and diverse building form engages with the landscape by being single storey at the perimeter rising to three storeys at the centre. The interesting and varied footprint provides a series of external partially enclosed spaces which embrace the landscape and provide some shelter from the worst of the elements. Generous natural light and highly effective natural ventilation are key drivers of the design exemplified by the large classroom windows and numerous rooflights coupled with cill louvre vents and classroom vent shafts. The project has become much more than just a building – a genuine focus for its community and a catalyst for the further regeneration of this peripheral area of Port Glasgow.

Ravenor Primary School Expansion

Ealing, Greater London

SEYMOUR HARRIS ARCHITECTURE / DANIEL BURTON PHOTOGRAPHY



Clients
Ravenor Primary School
Ealing Borough Council
Architect
Seymour Harris Architecture
Main Contractor
Kier Construction Southern
Project Manager
ECharris
Services Engineer
ECharris
Structural Engineer
ECharris
Quantity Surveyor
ECharris
Interior Designer
Seymour Harris Architecture
Landscape Architect
Seymour Harris Architecture

The accommodation within the new extension comprises the Nursery and three Reception classrooms, together with a central resource space, small hall and support facilities located on the ground floor and three Y6 Classrooms, staff room and central resource space located on the first floor. The building is expressed externally with exposed glulam timber colonnades along all four sides providing shelter and shade to external learning / play spaces. The outdoor play areas flow out from the building and the full height glazing to the classrooms develops an environment which flows visually and physically between the outside and inside. The interior of the building is one of openness and light, supplemented by large areas of opening windows providing an internal environment which has high levels of natural daylight and ventilation.

Redcar Leisure and Community Heart

Redcar, North East

STEVE MAYES PHOTOGRAPHY



Client

Redcar & Cleveland Borough Council

Architects

+3 Architecture
AFLS+P Architects

Project Manager

Deloitte

Structural Engineer

Buro Happold

Services Engineer

Buro Happold

Landscape Architect

OUBE

Main Contractor

Willmott Dixon

Quantity Surveyor

Cyril Sweett

Transport Consultant

AECOM

Artist

KH Studio

This distinctive new destination combines a new leisure centre, range of civic facilities, a business centre, car parking and major public realm improvements into a single, comprehensive redevelopment that knits together a previously fragmented part of the town. It brings together a range of council functions into a dedicated civic hub alongside a state of the art leisure centre that contains 3 pools and an innovative flow-rider. The new business centre provides accommodation to support fledgling businesses in the region. These functions are located around a new civic square which is tied back into the surrounding fabric via a tree-lined boulevard. The development acts as a catalyst to the future regeneration of the wider Redcar and Cleveland area and has transformed the western edge of the town centre.

Sainsbury's Supermarket

Blackpool, North West

MUSE DEVELOPMENTS LTD



Applicant

Muse Developments Ltd

Architect

Leach Rhodes Walker

Client

Sainsbury's Stores Ltd

Landscape Architect

Grontmij Ltd

Main Contractor

Shepherd Construction Ltd

Project Manager

Ward Robinson

Quantity Surveyor

Aecom

Services Engineer

WSP

Structural Engineer

Arup

This new statement foodstore is the commercial heart of the first phase of development within the overall Talbot Gateway Scheme, which also includes Blackpool Council's New Civic Offices. These projects, along with new highways and new public realm, are setting the standard for a new Central Business District and provide the opportunity for a strong focal point and vista towards the site from the seafront. The architectural concept has created a dynamic, transparent, active façade, using the significant pedestrian movement inside the store from the car park level to create interest and movement visible from the street. The building has been one of the catalysts to transform a neglected and under-utilised area of the town in to a modern welcoming environment which will provide civic pride and help regenerate and rejuvenate the town.



Seaham Marina North Dock

Durham, North East

NAPPER ARCHITECTS



Applicant
Napper Architects Limited
Client
Seaham Harbour Marina CIC
Architect
Napper Architects Limited
Conservation Architect
Napper Architects Limited
Quantity Surveyor
Gardiner and Theobald
Structural Engineer
Cundall
Services Engineer
Cundall
Civil Engineers
Cundall
CDMC
Napper Architects Limited

In response to industrial decline in the 1990's a collaboration of public and private sector agencies came together to form the East Durham Task Force. Its objective was to arrest decline resulting from the closure of the coal mining industry in the area and to provide the building blocks for recovery. As a direct result of this collaboration, this project has regenerated the historic Seaham North Dock, boosting local enterprise, jobs and income and increasing visitor numbers to the town and wider area. After a long period of neglect this project is turning the surviving fabric into a key part of the town and giving it a connection with the sea and harbour as a source of joy and pride.

Shepherd's Bush Hotel

Hammersmith & Fulham,
Greater London

ANTHONY WELLER



Architect
Flanagan Lawrence
Client
Dorsett/Kosmopolitan Hotels
Universal Design Consultant
David Bonnet Associates
Interior Designer
Flanagan Lawrence (Public Areas)
Quantity Surveyor
McBains Cooper
Structural Engineer
URS / Expedition
M&E Engineers
McBains Cooper
Fire Engineering
FDS
Interior Designer
Kosmopolitan Hotels
Main Contractor
Ardmore Construction Ltd

This Grade II listed building dating from 1923, designed by Frank Verity was originally constructed as a 3000 seat cinema. After heavy damage caused by a V1 flying bomb during World War II, the building was vacant until 1955 when it was restored and reopened as a bingo hall. Before the recent redevelopment of the building into a hotel, the building had been disused for over a decade and had fallen into a state of disrepair. While the front elevation maintained much of its original design intent, the original interiors had largely been demolished and the rear façade had been extensively added to and adapted over its lifetime. The conversion of the pavilion into a new four-star, 320 room hotel, with associated leisure and retail facilities, reactivates the streetscape with an active frontage containing the hotel entrance, a restaurant and cafe with outdoor seating. The interior design concept was derived from a detailed understanding of the building's history and context, which has resulted in an elegant and balanced response that complements and refines the original character of the building.

Shree Swaminaryan Mandir

Brent, Greater London

FEDERICO REDIN / LTS ARCHITECTS



Client
Swaminarayan Gadi
Architect
LTS Architects
Services Engineer
Max Fordham
Structural Engineer
Engineers HRW
Landscape Architect
LDA Design
Quantity Surveyor
Corrigan Gore & Street
Planning Consultant
Tibbalds
Approved Building Control Inspector
MLM
Planner
London Borough of Brent

The campus is the manifestation of a vision the local Swaminarayan community nurtured for 25 years and is the result of over six years of intensive endeavour. It brings together traditional religious architecture and contemporary design, combining centuries-old craftsmanship with modern construction techniques. Comprising a new Hindu temple, community hall, low-cost workspaces and public space, the series of buildings has a surprisingly rich mix of uses, from worship and contemplation, through to celebration, sports, performance, work and relaxation.

The Avenue

Uttlesford, Eastern

SIMON HARVEY



Applicant
Pollard Thomas Edwards
Architect
Pollard Thomas Edwards
Client
Hill
Landscape Architect
Elwood Landscape Design
Structural Engineer
Rossi Long
M&E Engineers
M Rogerson Ltd
Laser Electrical Ltd
Transport Consultant
Savills
Affordable Housing
Hastoe Housing Association
Local Authority
Uttlesford District Council

This cluster of 76 new homes reflects local traditions and settles into the mature landscape and surrounding conservation area. The homes range from one-bedroom flats to five-bedroom detached houses, with 18 flats and small 'cottages' specifically designed for the over-55 market. The vision was to create a place which is both distinctive and integrated; a place of quality, where people will choose to live. The layout creates a series of character areas, each of which reflects the pattern and character of the immediate neighbouring townscape. The development has helped fund a new junior school and improvements to the school buildings.

The Battle of Bannockburn Visitors Centre

Stirling, Scotland

KEITH HUNTER



Architect
Reiach and Hall
Architects
Clients
National Trust for
Scotland
Historic Scotland
Conservation
Architects
Andrew PK Wright
Reiach and Hall
Architects
Landscape Architect
Ian White Associates
Landscape Architects
Main Contractor
Mansell Construction
Services Ltd
Quantity Surveyor
Turner and Townsend
Services Engineer
KJ Tait Engineers
Structural Engineer
SKM
Theatre Design
Bright White Ltd
Lighting Design
Foto ma
Mike Stoane Lighting

It was the mission of The National Trust for Scotland at Bannockburn to communicate the local, national and international significance of the site to visitors and to create an enjoyable and accessible learning experience for all. A visit to Bannockburn is dramatic, exciting, interesting, stimulating, inspirational, enjoyable and memorable. Every visitor leaves having experienced the battle for themselves and understands the significance of Bannockburn to Scotland today. Significant conservation work to the category A listed monuments, including the Rotunda, the magnificent bronze Equestrian Statue, the Flagpole and the Cairn have been carried out. In addition to improvements to the overall landscape of the site and landscape works associated with the new visitor centre.

The Clothworkers' Centre for the Study and Conservation of Textiles and Fashion

Hammersmith & Fulham, Greater London

PHILIP VILE



Architect
Haworth Tompkins
Client
Victoria and Albert
Museum
Main Contractor
Fairhurst Ward Abbotts
Project Manager
Lend Lease
Structural Engineer
Alan Baxter Associates
Cost Consultant
Baker Mallett
Lighting Consultant
DHA Design
Wayfinding
Consultant
Holmes Wood
Services Engineer
Zisman Bowyer &
Partners

The new Centre for the Victoria & Albert Museum is located within the Grade II-listed Blythe House, designed by Sir Henry Tanner in 1890s as the headquarters of the Post Office Savings Bank, and used since the 1980s as a storage facility by the V&A, Science Museum and British Museum. The project provides dedicated storage, study areas and conservation facilities for the V&A's internationally significant collection of over 100,000 Textile and Fashion objects, as well as a new accessible public entrance to Blythe House. In the first year since opening, the building has welcomed double the number of annual visitors, who come not only to use the study resources but also to participate in the popular monthly tours of the Clothworkers' Centre. The project has generated renewed interest in Blythe House as a key public resource, and it is anticipated that the works will become a generator for further renovations and interventions throughout the building.

The Forum

Southend-on-Sea, Eastern

ANDY SPAIN / WWW.ASVISUAL.COM



Clients

Southend Borough Council
University of Essex
South Essex College

Applicant

ADP

Architect

ADP

Main Contractor

Wates

Quantity Surveyor

EC Harris

Structural Engineer

AKS Ward

Services Engineer

Hoare Lea

Landscape Architect

ADP

Project Manager

EC Harris

Interior Designer

ADP

Sustainability

ADP

Planning

ADP

This unique and exciting partnership project, has delivered a brand new state-of-the-art library and learning facilities in the heart of the Town Centre. The project was delivered jointly by Southend-on-Sea Borough Council, the University of Essex and South Essex College to offer residents and students unprecedented access to the books, archives and records they jointly hold. This partnership approach has delivered upgraded and expanded library and learning facilities, whilst delivering more cost-effective services that meet the changing needs of their customers. In addition to the library, new research and education facilities including a 200-seat lecture theatre, teaching areas, seminar rooms and offices have been provided. The internationally recognised Focal Point Gallery has made The Forum its new home, bringing local, national and international art to a wider audience.

The HELIX, Falkirk

Falkirk, Scotland

IRONSIDE FARRAR



Client

Helix Trust

Applicants

Helix Trust
Ironsides Farrar Ltd

Landscape Architect

Ironsides Farrar Ltd

Project Manager

Gleeds

Artist

Andy Scott

Quantity Surveyor

Gleeds

Lighting Designer

Lightfolio

CDMC

Mouchel

Masterplanner

Ironsides Farrar Ltd

Planning Consultant

Ironsides Farrar Ltd

Architect

Keppie

Main Contractors

R J McLeod
Balfour Beatty
SH Structures
Thomas Menzies

Civil Engineers

Ironsides Farrar Ltd

Structural Engineer

Grontmij
Royal Haskoning

Public Art Consultants

Vista Projects
Landlab

Play Equipment Suppliers

Timberplay
Scotland

Environmental Consultant

Ironsides Farrar Ltd

Signage Graphic Design

D8 Graphic Design

The project is based on a new and radical intent to transform a place and create an agenda for change that was transformational for the communities of Falkirk and Grangemouth. It set the objective of re-building connections, stitching together fractured and fragmented communities around a green network of usable, appealing greenspace. Connecting two communities, the vision offered opportunity to meet a deficit in greenspace needs and the capacity to form a new gateway and icon for the area. The design embraces a holistic vision for change, transforming and introducing bold interventions (Water Body / Kelpies / Green Networks) and developing a community programme unprecedented in Scotland. Engagement with local communities and stakeholders placed people at the core of decisions, connecting communities with design and designers and working to facilitate a new sense of participation, momentum and ownership has been achieved.



The Wilson : Cheltenham Art Gallery and Museum

Cheltenham, South West

BERMAN GUEDES STRETTON



Architect
Berman Guedes
Stretton
Client
Cheltenham Art
Gallery and Museum
Services Engineer
Buro Happold
Structural Engineer
Aecom
Quantity Surveyor
Aecom

This development is a major, modern addition to the Conservation Area of Cheltenham and has significantly benefitted this historic place, successfully bringing people through from the other side of the town. Community involvement was embedded in the design process from the outset and its exhibition and display space has greatly increased. The design also includes improved and fully-accessible visitor facilities, including lifts, shop, café and a new tourist information centre. The aspiration is that the Art Gallery and Museum will become the central fulcrum to a developing “cultural quarter” within the town of Cheltenham.

TOKKO Youth Space

Luton, Eastern

WILL PRYCE



Architect
Astudio
Client
Wates Construction
M&E Engineers
Hoare Lea
Structural Engineers
Campbell Reith
Fluid Structures
Sub-Contractor
Red Architecture
(cladding)

The Youth Space is designed to engender a sense of belonging to the youth of Luton, attracting a broad spectrum of young members, encouraging them to develop their skills and talents in a safe, inclusive and friendly environment. It provides a variety of facilities including a climbing wall, IT suite, dance studios, training rooms, multipurpose rooms and a café. As well as these spaces it provides a home for a Luton Youth Service and a large support and counselling service. All of these enable and empower young people to fulfil their declaration.

Uppingham School - Science Building

Rutland, East Midlands

KILLIAN O'SULLIVAN



Architect

Orms

Client

Uppingham School

Project Manager

AECOM

Structural Engineer

Brookbanks Consulting

Planning Consultant

Lucas Land & Planning

M&E Engineers

Ramboll

Acoustic Engineer

Ramboll

Landscape Architect

Robert Myers Associates

Main Contractor

Bowmer & Kirkland

Limited

The building provides state of the art science laboratories and support facilities. The design and finishes are to university standard and the intentionally oversized lab sizes have been designed to ensure maximum flexibility in the future to change the location of sciences. The design was developed through careful review and analysis of the existing buildings, responding to the mix of architectural styles in the area, with the materials palette selected to create an appropriate modern response to the streetscape. A contemporary external landscape scheme to the Western Quad and building perimeters has been implemented, with a mix of hedging, grasses, perennial planting with hard landscaping of natural stone and brick defining spaces within the quad.

Waddington Studios

Hackney, Greater London

BROTHERTON-LOCK



Client

Waddington Studios

Owner

Waddington Studios

Architect

Featherstone Young

Structural Engineer

Conisbee

Quantity Surveyor

Burke Hunter Adams

Services Engineer

Max Fordham LLP

Main Contractor

Harris Calnan

The new building makes a positive civic contribution to the mews street by capturing the character of the area and engaging the local community. Previously the home of Waddington Games, the pattern imprinted on the Cor-Ten steel street façade is based on the graphic designs of the back of their playing cards as a nod to the history of the site. The projecting 'hoisting box' on the top floor adds to the industrial heritage providing a mechanism for loading large-scale items to the main photographic studio on the upper level, whilst also offering a public view of the church on Church Walk not usually seen in the context of the street it has named. In contrast the two apartments that also front part of the street elevation, model themselves in scale and rhythm to the original terraced houses that once lined part of this street. The use of the punched pattern, opening shutters and recessed balconies all help to bring a smaller scale relief and modulation to the façade more in keeping with the residential buildings on the street.



Waverley School

Birmingham, West Midlands

TIMOTHY SOAR



Architect
Allford Hall Monaghan Morris
Client
Lend Lease
Main Contractor
Lend Lease
Structural Engineer
Stewart + Harris
Civil Engineers
Stewart + Harris
M&E Engineers
RPS Group
Acoustic Engineer
RPS Group
Fire Engineering
RPS Group
Landscape Architect
FIRA
Approved Building Control Inspector
ACIVICO
Graphic Design
Studio Myerscough
Educationalist
The Architects Practice

The school is organised around a series of self-contained learning clusters, defined by year group or specialism and these clusters are very much the starting point of an inside-out design approach to the building. The clusters are carefully located in relation to each other to form optimum educational adjacencies, within the four multi-storey finger-like blocks placed side-by-side on the sloping site. The placement and articulation of the blocks carefully balances the educational, contextual and financial constraints of this project. The positive relationships and communication between the architect, main contractor and subcontractors resulted in durable and cost effective solutions, meeting the aesthetic brief and enabling the limited budgets to be spent wisely and requiring less ongoing maintenance.

Witton Park Arena

Blackburn, North West

CAPITA PROPERTY & INFRASTRUCTURE



Client
Blackburn with Darwen Borough Council
Architect
Capita Property & Infrastructure
Project Manager
Capita Property & Infrastructure
Landscape Architect
Capita Property & Infrastructure
Quantity Surveyor
Capita Property & Infrastructure
Services Engineer
Capita Property & Infrastructure
Structural Engineer
Capita Property & Infrastructure
Acoustic Engineer
Capita Property & Infrastructure
Main Contractor
Eric Wright Construction

This new build indoor athletics training facility is situated in Witton Country Park, and adjacent to existing, outdoor, 400m track and field facilities. Conceived as simple form of two stacking volumes, the building evokes notions of sculpture in landscape. The technical requirements of the indoor running function, by their virtue, mean that a large building is required. A decision was taken to celebrate this size and play with monolithic forms rather than try to break down mass. The facility is widely used, forming the central focus for a number of local school groups and athletics clubs. The associated outdoor facilities are home to regional track and field events as well as organised cross country running. The scheme forms the backdrop to the wide range of events which take place within the park such as the annual bonfire, circus, fair, music festival and fun days.

Wokingham Medical Centre

Wokingham, South East

BARBARA WEISS ARCHITECTS



Architect
Barbara Weiss Architects
Client
Wokingham Medical Centre
Main Contractor
Beard
Quantity Surveyor
Smith Turner
Services Engineer
Peter Deer and Associates
Structural Engineer
Conisbee
Approved Building Control Inspector
Building Control Approval
CDMC
Smith Turner

A purpose built facility has been created by uniting its two teams onto a single site, enabling the provision of high quality medical care in the heart of Wokingham's community. Sited within the town centre's Conservation Area, this contemporary and innovative building is one of a 'new breed' of primary care facility and is one of the UK's largest single-site surgeries. The new design has created a facility that is calm, reassuring and welcoming, that has warmth and character. The building has been built to a high standard, and the careful use of wood and Burlington stone has paid off in terms of quality of build.

REIACH AND HALL ARCHITECTS

www.reiachandhall.co.uk



Reiach and Hall Architects, 6 Darnaway Street, Edinburgh, EH3 6BG tel: 0131 225 8444

AABC

Register of Architects Accredited in Building Conservation

© AABC



AABC is a self-financing, not-for-profit building conservation accreditation Register established in 1998 with the assistance of English Heritage. Its aim is to offer clients the reassurance of competency when seeking skilled and experienced conservation architects, safeguarding interests of the client and our historic built environment alike. If the survival of our historic buildings matter to you, ensure your architect is accredited!

Find the AABC Register at: www.aabc-register.co.uk

Make sure everyone gets your message.



Responsive websites and much more from www.madebybridge.com



Sumburgh Head

LIGHTHOUSE, VISITOR CENTRE AND NATURE RESERVE

A world class visitor attraction
shortlisted for a 2015 Civic Trust Award



www.sumburghhead.com

Chichester Festival Theatre

Chichester, South East

PHILIP VILE



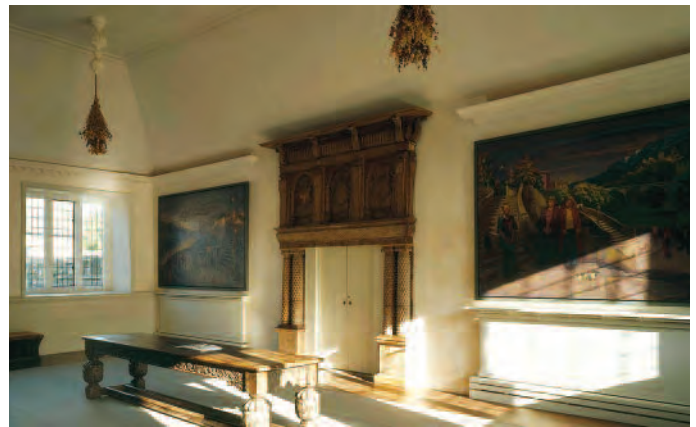
Architect
Haworth Tompkins
Client
Chichester Festival Theatre
Main Contractor
Osborne
Project Manager
Deloitte
Theatre Consultant
Charcoalblue
Structural Engineer
Price & Myers
Services Engineer
Skelly & Couch
Acoustic Consultant
Gillieron Scott Acoustic Design
Landscape Architect
Camlin Lonsdale Landscape Architects
Quantity Surveyor
Gardiner & Theobald
Collaborating Artist
Antoni Malinowski
Access Consultant
Babel

The redevelopment is a major restoration and renewal project of the mid-century Grade 2* listed theatre; incorporating a carefully remodelled auditorium, bigger foyer spaces, an improved parkland setting and a new back of house extension. The 1962 building was originally designed as a ‘pavilion in the park’ summer festival venue with the UK’s first thrust stage auditorium. The theatre’s dramatic, cantilevering concrete structure and lightweight cable-tied roof were extraordinarily bold statements at the time, but successive piecemeal extensions had gradually reduced the clarity and legibility of the original concept. After 50 years of service, operational issues were increasingly limiting, and the wear and tear of the existing fabric evident. The scheme is a very good display of research, analysis and assessment of the building’s significance as well as its construction and materials, enabling the justified removal of later piecemeal alterations. Good, sound conservation principles have been demonstrated in the preservation of the original structure as well as new interventions made to improve theatrical operations and public enjoyment.

Godolphin House

Cornwall, South West

PETER COOK



Architect
Architecton Limited
Structural Engineer
David Ellis Associates
Quantity Surveyor
Press & Starkey
Main Contractor
Carrek
Client
National Trust
Planner
Cornwall Council
Main Contractor
Nimbus
Services Engineer
Integrated Design Partnership
Archaeologist
Keystone Historic Buildings Consultants

The house at Godolphin represents development and change through history and circumstances, from medieval times. The largely 15th century east range, ruined great hall at the south range and 16th century upgrading of the west range have all been repaired over three phases, along with the repair, alteration and conversion of the 1634 north range. It is an ancient complex, with the house, stables, various outbuildings and barns, a 19th century farm, and an important landscape. The project has allowed Godolphin to continue as an historic site for visitors, with conversion of the house for holiday accommodation while providing periods of visitor access throughout the year. The beautiful and robust qualities of space, form and surface has survived the extensive and comprehensive repair and extensive steel stitching now restrains the masonry. All plasterwork, boarding and joinery were assessed and surveyed to establish their date and condition, allowing complete retention and conservation of all important fabric. The years of cumulative research and analysis is commendable, all of which has informed material specifications and development. Very good illustration of sound repair philosophies have been put into practice, alongside interventions that have been made to ensure this highly important building has a stable future.



Llanelly House

Carmarthenshire, Wales

PHIL BOORMAN



Architect
Austin-Smith:Lord LLP
Client
Carmarthenshire
Heritage Regeneration
Trust
Main Contractor
John Weaver
Construction
Original Architect
Craig Hamilton
Architects
Quantity Surveyor
Parry Dawkin
Structural Engineer
Opus International
Services Engineer
Robert Bloxham-Jones
Associates
Lighting Consultant
Kate Wilkins Lighting
Designers Ltd.

The project has restored the Grade I Listed Georgian Town House to its 18th Century glory, turning it into a major visitor attraction. The building required much needed saving from water ingress and rot and the work was undertaken around a programme of high quality conservation and restoration that has drawn from, interprets and enriches the communities of Llanelli through restoring the House to its place in Llanelli's heritage. The building is a rare example of an early Georgian Townhouse and contains exquisite treasures such as fine overmantle paintings, rare grisaille wall paintings trimmed with gold leaf, and lavish oak panelled rooms. The philosophy behind the programme of works was based on a clear distinction between the restored fabric of the house and the new interpretative interventions and facilities. The scheme is a very good illustration of research and analysis leading to a well-considered restoration. Good practical implementation of repair techniques are demonstrated, with modern adaptations to service its new use.

Shrewsbury Museum and Art Gallery

Shropshire, West Midlands

PHIL BOORMAN



Architect
Austin-Smith:Lord
LLP
Client
Shropshire Council
Main Contractor
ISC
**Exhibition
Consultant**
John Dangerfield
Quantity Surveyor
John Pidgeon
Partnership Ltd.
**Structural
Engineer**
Curtins Consulting
Services Engineer
Silcock Dawson
**Planning
Consultant**
Curtins Consulting
Acoustic Engineer
BDP Acoustics

The Museum has been created within a unique collection of buildings including the 13th Century Vaughan's Mansion, the 19th Century Music Hall and Assembly Rooms, a medieval shut, the town's 18th Century prison cells and 20th Century civil defence bunker. The project has deliberately blurred the distinction between visitor information and interpretation by using the extensive Museum Collections of Shrewsbury and Shropshire to inspire visitors to further explore the county. The scheme retains the familiar entrance to the Music Hall, but behind the elegant classical façade almost everything has changed. Additional space was created by removing the low quality and unsympathetic 20th Century extensions and constructing a three-storey extension providing a new public circulation hub. This very successful conservation, restoration and development scheme required several different approaches for the various buildings and materials. Good research and analysis has led to the effective repair, modernisation and up-grading of the buildings and spaces for public use and enjoyment.

Stewart Park

Middlesbrough, North East

NAPPER ARCHITECTS



Conservation Architect
Napper Architects
Landscape Architect
Southern Green
Client
Middlesbrough Council

Stewart Park was the birthplace of Captain Cook in 1728; in 1853, Henry Bolckow built Marton Hall there, and in 1924, Thomas Stewart bequeathed the Estate to the people of Middlesbrough. The 1864 Marton Hall, Estate Buildings, Tuscan Temple, Loggia and Captain Cook Memorial, set within the Park are all Grade II listed, and it was the restoration of these structures, particularly the former Estate Buildings, to provide the Education Base, Rangers Base, Interpretation Base and Vocational Training Centre, plus a new Visitor Centre and hard and soft landscaping that was the basis of the project, revitalising the buildings and park, to the benefit of both the local community and visitors alike. This commendable community-led project with a very good, sound conservation philosophy, good assessment and analysis and well thought out execution of repairs and detailing has resulted in an excellent facility and stable future for the buildings.

Sumburgh Head Lighthouse

Shetland Islands, Scotland

SHETLAND AMENITY TRUST



Conservation Architect
Groves-Raines Architects
Client
Shetland Amenity Trust
Main Contractor
CorraMore!
Structural Engineer
David Narro Associates
Quantity Surveyor
Morham & Brotchie Ltd
M&E Engineers
Irons Foulner Consulting Engineers
Inclusive Design Consultant
Adapt Access Services

Designed by Robert Stevenson in 1819, Sumburgh Head Lighthouse, along with its associated keeper's houses, is the oldest Stevenson Lighthouse in Shetland and has been in use since its construction. Further buildings were added in 1908, including the Foghorn and Engine Building. During WWII, radar installations were added to detect enemy aircraft and shipping in the North Sea. The project works has repaired, adapted and extended the complex, to create a destination visitor attraction. The conservation of Sumburgh Head encompassed all of the existing buildings on the estate site with the addition of a modern extension: the curved glass fronted concrete education room perched on the edge of the site, taking advantage of the breathtaking views. The project demonstrates how active community involvement ultimately led to the rescue, repair, restoration and adaptation of this important lighthouse structure for future generations to enjoy. A good conservation strategy for repair and rejuvenation of structure including new interventions has been carried out.



The Canons' Cloister

Windsor, South East

MARTIN ASHLEY ARCHITECTS



Conservation Architect
Martin Ashley Architects
Client
Dean and Canons of Windsor
Main Contractor
Paul Webb Roofing Ltd
Project Manager
Royal Household Property Section
Quantity Surveyor
Huntley Cartwright
Structural Engineer
SFK Consulting
Services Engineer
Environmental Engineering Partnership
Archaeologist
Dr John Crook
CDMC
Peter Brett Associates

Built around 1350 as lodgings for the canons and priests serving the Order of the Garter, the buildings continue to provide residential accommodation to the Chapel's canons and lay clerks - making the cloister the earliest surviving collegiate range in Britain still remaining in its original use. The quadrangle of timber-framed lodgings is one of the earliest parts of Windsor Castle and is both Grade I listed and a Scheduled Ancient Monument. Incremental alterations over the centuries meant that the original timber frame and many features substantially survived behind a 19th century restoration, giving conservators a challenging task of conserving both the original fabric and later additions to preserve the buildings' authenticity. Repairs were made to the roof structure using traditional techniques or introducing carefully detailed stainless steel members. Insulation, ventilation, fire protection and new maintenance access hatches were added. The project revealed new knowledge about the cloister and the wider architectural history of Windsor Castle. Very good research and analysis of the building's development and its materials has been carried out with good approach to new discoveries throughout the project and challenges well managed. Excellent technical detailing is evident, with necessary and well-considered up-grading. This is a very successful conservation scheme in-line with true conservation principles.

The Haining, Conversion of Coach Houses

Selkirk, Scotland

GRAEME DUNCAN



Architect
Lee Boyd
Client
The Haining Charitable Trust
Main Contractor
James Swinton
Quantity Surveyor
M&B
Services Engineer
Max Fordham
Structural Engineer
David Narro Associates
CDMC
Stewart Anderson Assoc

This Grade A Listed Palladian Mansion House and estate dates back from the early years of the 19th Century. The ambitious undertaking has revitalised the house, its grounds (including a loch) and outbuildings, for the use and benefit of the community, after the property was bequeathed to the 'People of Selkirkshire and the wider public' by the previous owner. The conversion to a new use has been handled with care and attention to the historic fabric in consultation with Historic Scotland, whilst providing modern and comfortable work spaces. The ten impressive archways of the coach houses remain intact with the new slim line aluminium glazing passing behind the arches to avoid a conflict between existing stonework and new fabric. The internal spaces are uncomplicated and retain the volumes of the original spaces, but now with thermally efficient linings to roofs and walls. The scheme is a very successful illustration of how good, sound conservation principles can deliver modern and sophisticated facilities. Very well-considered repairs and new interventions to completely rejuvenate the stables into business accommodation for local creative people have been delivered.

The PORTICO Project

Chester, North West

DEWI GLYN JONES / ANDY MARSHALL



Architect
Donald Insall Associates
Client
Cheshire West and Chester
Conservation Architect
Donald Insall Associates
Structural Engineer
Ramboll
Creative Design Consultant
Imagemakers

The Project has created a European model for interventions that utilise the latest building techniques and materials to enhance how we experience, understand and enjoy our built heritage. Chester's City Walls are a nationally and internationally recognised heritage asset. That the walls and towers have national significance is expressed through their Scheduled Monument and Listed Building status and are the single most important feature that ties together Chester's rich history. Each tower can be regarded as a 'punctuation' point and an opportunity to draw out a distinctive chapter in Chester's history. The scheme demonstrates good research, analysis and assessment of the structures, the materials and proposed techniques for repair and stabilisation. Well-considered and innovative solutions have provided a much improved experience for visitors, repairing and revealing spaces previously inaccessible. A very sound conservation approach, using modern intervention in an appropriate and artistic manner has been applied.

Torre Abbey

Torbay, South West

ARCHITECTON LIMITED



Conservation Architect
Architecton Limited
Structural Engineer
Hockley and Dawson
Services Engineer
Integrated Design Partnership
Main Contractor
Kier
Quantity Surveyors
Gleeds (Phase 1)
Sweetts (Phase 2)
Planner
Torbay Council
Client
Torbay Council
Archaeologists
MoLAS (Phase 1)
Oxford Archaeology (Phase 2)
Project Manager
Sweetts
Museum Design
Richard Fowler Associates
Education Consultants
Newbery & England
Landscape Architect
Robert Myers Associates
(Phase 1)

The project has repaired and improved the grade 1 listed building as a revitalised museum complex, after a period of decline. This scheduled ancient monument is the oldest building in Torquay, with a monastic foundation in 1196, and has retained extensive elements and layout from its important medieval period. The modifications, extensions and adaptations made over the centuries had internally, obscured much of the quality and history of the place. The ruinous areas of monastic buildings represent a major part of the Abbey's history and required consolidation and repair as well as incorporation into the interpretation and display of the museum. The successful conservation and regeneration scheme has incorporated sound conservation principles, good repair techniques and an interesting approach to the presentation of the building itself, as well as its artefacts.



Sculpture in the City 2014

City of London, Greater London

NICK TURPIN



JIM STEVENSON



Applicant
City of London Corporation
Co-Director
Sculpture in the City
Project Manager
Aetc
Project Partners
30 St Mary Axe
Aon
Aviva
British Land
Brookfield
Hiscox
Tower 42
Project Partner
Willis
WRBC Development

Sculpture in the City 2014 features 14 sculptures displayed across the Eastern City Cluster. The sculptures have been loaned to the project for one year and in May - June 2015 will be de-installed and returned to the artists or galleries. Each sculpture has been carefully sited giving consideration to the surrounding environment including buildings, construction sites and pedestrians. The temporary nature of the artworks ensures it remains dynamic, responding to the constantly changing urban environment of this part of the City. The selected pieces are all robust, easy to maintain and fit for outdoor display. Each sculpture is accompanied by an information sign. Delivered through a successful and positive partnership between local businesses and the City of London, Sculpture in the City provides a focus for school and community events which promote the City's cultural offer. These events encourage the wider community to visit the City, participate in free tours or activities and interact with the sculptures, buildings and City environment.

Architect
Studio Weave
Structural Engineer
Webb Yates
Main Contractor
Nicholas Alexander

Smith was a pavilion and exhibition that showcased the innovative use of tools in making, from historic crafts to contemporary fabrication techniques, during May 2014 to celebrate the history of making in Clerkenwell. Throughout history, the area has been home to a diverse range of smiths: from silversmiths, goldsmiths, watchsmiths and clocksmiths, to booksmiths, woodsmiths, inksmiths, and even coffeesmiths. The Smith pavilion was especially interested in the creative re-appropriation of tools and equipment for new uses. While on site at St John's Square, as part of Clerkenwell Design Week, Smith was home to a series of resident contemporary craftspeople that ran workshops and demonstrations for members of the public. The pavilion was made using fibre-cement panels, a material originally invented by re-appropriating an old paper mill and spinning-machine. Equitone Fibre-cement has a range of strengths in its material properties, but is rarely used other than as exterior cladding in large sheets.

Regional Finalists 2015

Projects that were considered to be of merit at a regional level by local assessor teams



Schemes by region, scheme name, local authority area, architect and entrant.

1 Scotland

- **Advocate's Close** (City of Edinburgh) by Morgan McDonnell Architecture Ltd
- **Kirkmichael Primary School** (South Ayrshire) by Holmes Miller
- **The City of Edinburgh Methodist Church** (City of Edinburgh) by Page \ Park Architects
- **Ardrossan Medical Centre** (North Ayrshire) by Reiach and Hall Architects
- **Auchmuty High School** (Fife) by Fife Council Property Services
- **Lamb's House** (City of Edinburgh) by Groves-Raines Architects
- **New Possilpark Health Centre** (Glasgow City) by AHR
- **Ormiston Medical Centre** (East Lothian) by Patience and Highmore Ltd
- **The Vale Centre for Health and Care** (West Dunbartonshire) by Archial Norr
- **Dalkeith Townscape Heritage Initiative and Conservation Area Regeneration Scheme** (Midlothian) by Midlothian Council

2 Northern Ireland

- **Newry Linkages Phase 2** (Newry and Mourne) by URS
- **Station Square** (Coleraine) by The Paul Hogarth Company [Entrant: Coleraine Borough Council]

3 North West

- **Dunham Massey** (Trafford) by Brownhill Hayward Brown [Entrant: William Anelay Limited]

- **L20 Building, Hugh Baird College** (Sefton) by IBI Group
- **Preston War Memorial** (Preston) by Research Design Architecture Ltd [Entrant: Preston City Council]
- **Slackwood Farm House** (Lancaster) by Paul Archer Design, Blackett - Ord Conservation Architects & Donald Insall Associates Ltd
- **The Corn Mill, Barrowford, Lancashire** (Pendle) by Taylor Architecture Practice

4 North East

- **Littlehaven Promenade and Seawall** (South Tyneside) by OOBELtd
- **Conservation and Restoration of The Smithy, Hetton le Hole** (Sunderland) by Beaumont Brown Architects LLP [Entrant: Limestone Landscapes Partnership]

5 Yorkshire & Humberside

- **Barnsley Town Hall:** Experience Barnsley Museum and Barnsley Pals Square (Barnsley) by NPS [Entrant: Barnsley Metropolitan Borough Council]
- **Sewerby Hall** (East Riding of Yorkshire) by East Riding of Yorkshire Council

6 Wales

- **HWB Dinbych** (Flintshire) by John McCall Architects
- **Roch Castle** (Pembrokeshire) by Acanthus Holden Architects

7 West Midlands

- **The Guide Dogs For The Blind Association - The Guide Dogs National Breeding Centre** (Warwick) by Broadway Malayan
- **Kemball School** (Stoke-on-Trent) by CPMG Architects
- **The School Yard** (Birmingham) by K4 Architects Ltd

8 East Midlands

- **College Court** (Leicester) by Associated Architects LLP
- **Nottingham Hub Station** (Nottingham) by Pascall+Watson

9 South West

- **Bath Spa University - Commons** (Bath & N E Somerset) by Cube Design Ltd
- **Ralph Allen Yard** (Bath & N E Somerset) by Hewitt Studios LLP
- **Reading Station** (Reading) by Grimshaw
- **110 At the Quay** (North Somerset) by Stride Treglown
- **Locking Parklands Phase II** (North Somerset) by Stride Treglown
- **New Reception Classroom** (North Somerset)

by The Hookway Partnership LLP [Entrant: Burrington C of E VA Primary School]

- **New Visitor facilities, Little Paradise, Salisbury Cathedral** (Wiltshire) by St Ann's Gate Architects
- **The Bishop's Palace, Wells** (Mendip) by Caroe & Partners Architects

10 South East

- **Babcock Galleries, National Museum of the Royal Navy** (Portsmouth) by Purcell
- **Bradfield College Greek Theatre** (West Berkshire) by Studio Octopi
- **Maggie's Oxford** (Oxford) by Wilkinson Eyre Architects
- **Berewood Primary School** (Winchester) by Hampshire County Council
- **John Henry Brookes and Abercrombie Building, Oxford Brookes University** (Oxford) by Design Engine Architects

11 Greater London

- **Christ Church Spitalfields New Nursery & Community Building** (Tower Hamlets) by SCABAL
- **Keo House** (Richmond upon Thames) by Piercy & Company
- **Paddington Integrated Project** (Westminster) by Weston Williamson + Partners
- **Curtain Rd** (Hackney) by Duggan Morris Architects
- **East Village** (Newham) by Triathlon Homes & Get Living London
- **Ham Yard Hotel** (Westminster) by Woods Bagot
- **Opal Mews** (Brent) by Min Hitchcox Design [Entrant: Clifton Securities]
- **Wembley Park - Phase 1** (Brent) by Leslie Jones Architecture, The Manser Practice & PRP Architects [Entrant: Quintain]

12 Eastern

- **Allhallows Multi-Storey Car Park** (Bedford) by Bedford Borough Council
- **Kings Road, Chelmsford** (Chelmsford) by Ingleton Wood LLP
- **Saffron Hall** (Uttlesford) by The Tooley & Foster Partnership
- **The Brandon Centre** (Suffolk Coastal) by Concertus Design & Property Consultants Ltd

International

- **Court of Justice** (Hasselt, Belgium) by J. MAYER H.
- **Greenhouses in the Botanical Garden, Aarhus University** (Aarhus, Denmark) by C.F. Møller Architects



Civic Trust Awards Assessors and Members

We are extremely grateful to all the volunteer assessors who give their time, knowledge and expertise to help the Civic Trust Awards. Senior architects, universal design professionals, planners and passionate local community representatives work together to ensure that our assessment process remains comprehensive and impartial.

Adam Tither
Adrian Dunning
Alfred Munkenbeck
Alistair Barr
Allan Booth
Amir Ramezani
Andrew Costa
angela dougall
Antoine Pascal
Barry North
Beccy Brookwell
Brian Towers
Calvin Bruce
Carol Lelliott
Catherine Skelcher
Celia Clark
Charlotte Ambrose
Chloe Granger
Chris Harrowell
Chris Twomey
Christopher Twomey
Colin Haylock
Dale Jennings
Dan Press
Darren Jones
Darren Ward
David Jennings
David Simister
David Winpenny
Debbie Allaire
Deborah Robertson
Derek Cox
Edward Bailey
Edward Burd
Elizabeth Moon
Emma Keyte
Emma Luddington
Fergal McDonnell
Frances & Joe Carroll
Frank Woods
Geoff Sloan
Gerald Reilly
Glyn Emrys
Gordon Fleming
Gordon Saunders
Graham Cox
Graham Mitchell
Haiqal Che Zulhikam
Heather Morrison
Helen Ramsden
Hugh Broughton
Ian Flack
Ian Hardy
Jack Gillon
James Clark

James Handley
Jan Cresswell
Jan Loveless
Jan Morgan
Jane Burrige
Janice Morgan
Jason Mordan
Jean Grant
Jean Hewitt
Jennifer Beaumont
Jens Bergmark
Jeremy Estop
Jill Channer
Joan Humble
Joanne Atkinson
John Hearn
John Hickey
John Norman
John Peverley
Jonathan Freegard
Judie Collins
Julian Orbach
Julian Tollast
Justin Nicholls
Justine Sharman
Karen Pickering
Karl Ruddie
Keith Ball
Keith Knight
Ken Moth
Kevin Brown
Kevin Moore
Kieran McMahan
Kirsten Lees
Liz Wrigley
Maarek Tammeorg
Malcolm Hankey
Maria Benitez
Mark Cummins
Marney Walker
Martin Affleck
Mary Hall
Matt Payne
Matthew Crook
Maya Donelan
Michael Tsoukaris
Mike Cook
Mike Gray
Mo Mohammadi
Monica Tross
Moray Royles
Nathan Blanchard
Neil Verow
Nick Evans
Nicola Walker

Nigel Craddock
Niko Grigoropoulos
Oliver Chapman
Orla McCann
Pascal Wensink
Patricia Mackintosh
Paul Gray
Paul Houghton
Paul Scudamore
Pauline Waddilove
Peter Barker
Peter Connell
Peter Drummond
Peter Goodwin
Peter Monk
Phil Kavanagh
Pierre Wassenaar
Piers Smerin
Rachel Baldwin
Rachel Glenny
Rebecca Meadowcroft
Richard Dryden
Rob Hearne
Robert Sakula
Roger FitzGerald
Roger Joyce
Rolfe Kentish
Sabrina Aaronovitch
Sally Mackay
Samuel Lyons
Sandra Manley
Sarah Baldwin
sarah featherstone
Simon Lamprell
Simon Malam
Stephen Wells
Steven Nicholson
Stewart Coulter
Sue Sadler
Susan Fulton
Terence Edgar
Thomas Langlands
Tim Garratt
Tim Skelton
Tim Tuke
Tom Coward
Tom Morgan
Tom Yellowley
Tommy Devine
Tony Joyce
Tony Michael
Valerie Wenham
Warren Whyte
Yannis Roussos
Yasmin Shariff

Thank you to our Corporate and Local Authority Members for their continued support:

Wilkinson Eyre Architects
Metropolitan Workshop LLP
BDP
ADP
EPR Architects
Keith Williams Architects
Emrys Architects
Nicholas Hare Architects
Haverstock
Studio Engleback
RCKa
FalknerBrowns Architects
McDowell + Benedetti
Hugh Broughton Architects
Churchill Hui
City of Edinburgh Council
Glasgow City Council
Sandwell Council
Blackpool Council
Lambeth Council

Civic Trust Awards

If you would like to get involved with the Civic Trust Awards as an assessor, or would like more information about our Membership benefits, we would very much appreciate your support.

Please contact Karen Hankey on info@civictrustawards.org.uk for more details.



QUEEN ELIZABETH OLYMPIC PARK

LONDON'S NEW PARK

FREE
ENTRY TO THE
PARK

Discover it. Enjoy it. Share it.
QueenElizabethOlympicPark.co.uk



Derwent London is delighted to sponsor the

Civic Trust Special Award for Brick 2015

DERWENT
LONDON

Turnmill
London EC1
Architects: Piercy&Co
Completion: 2015

